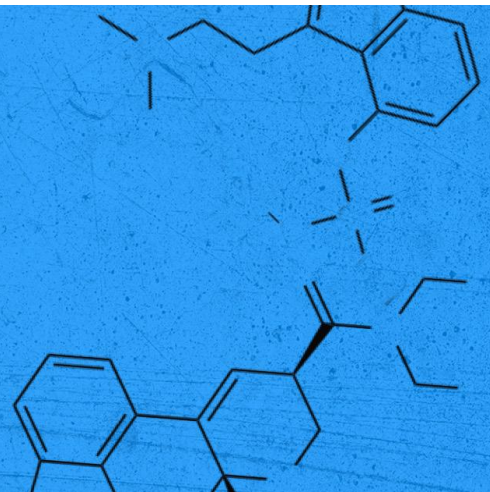


# CHEMICAL EXILE

A PSYCHOGEOGRAPHIES PROJECT

CHAPTER 2  
ADAMS MORGAN



**YOUR DESTINATION:** Adams Morgan, starting at the Line Hotel 2468 Champlain Street NW, Washington, DC

**GETTING THERE:** There is street parking available in the neighborhood but it may require patience to find. The Line Hotel is a 15 minute walk from the Woodley Park Metro on the metro's Red Line. The Line does offer \$30 valet parking if you're feeling fancy.

**HOURS:** The Adams Morgan neighborhood can be explored anytime, but it's probably best to see the sights in the daylight.



**WHAT YOU'LL NEED:** Headphones or speaker phone to listen to a 5-minute audio file on your smart phone, your box, and good walking shoes. *If you don't have a smart phone or headphones (or don't want to deal with headphones), listen to the link below before you leave the house.*

**WHAT TO DO WHEN YOU ARRIVE:** Grab a seat on the front steps of The Line Hotel, or if you're comfortable doing so, feel free to go inside and find a seat in their remarkable lobby. Open your box, plug in your headphones and listen to the audio file Teddy has saved at this link: [bit.ly/dccdadresearch](https://bit.ly/dccdadresearch). *(Just type it as written into your browser window with no caps then double click on the audio file saved in there.)*

Then explore the contents of your box in the order in which you find it. Use the link above to take a deeper dive into Teddy's research too if you wish. When you're done, follow the map Teddy outlines in her journal. Take some notes along the way (mental, paper or photographic) and see if what you see lines up with what Teddy sees.



**A GREAT PSYCHOGEOGRAPHIC EXPLORATION** includes: **Wandering** as you explore your physical world in a leisurely way, **Subverting** your everyday relationship with the city through a fresh perspective, **Discovering** the present through the prism of the past...and maybe a dash of the occult. As you explore the present, past and fictional world of *CHEMICAL EXILE*, think about where these ideas converge. If you're moved to snap a photo, sketch a vision or jot down a moment in time--do it.

And as always you can share your unique perspective with us at [info@rorschachtheatre.com](mailto:info@rorschachtheatre.com) or tag us on social media (Instagram: @rorschachdc, facebook/rorschachtheatre, #chemicalexile #psychogeographies)

**IF YOU'VE BROUGHT A YOUNG (OR YOUNG AT HEART) RORSCHACHER ALONG:** There's a great playground at the Marie Reed Community Center. Also ask them to be on the lookout for cows eating ice cream. (There's a faded mural over City Bikes at Euclid & Champlain, a delightful reminder of a long-gone Ben & Jerry's in that spot.)

**ACCESSIBILITY:** The Line Hotel has an accessible entrance on Champlain Street just south of Columbia Road. The path outlined on Teddy’s map includes a few staircases as you pass through the Marie Reed Community Center. These could be avoided by making a longer loop down to Florida Ave and turning left on Champlain.

### OTHER THINGS TO EXPLORE:

*These diversions (probably) don’t pertain to our story, but you may enjoy them nonetheless.*

- The Adams Morgan Plaza, at the south west corner of 18th and Columbia is, as of November 2021, in tense state of flux. Community members would like the plaza to remain a public gathering space. The owners have plans to develop it soon. You can follow the community’s efforts at [www.admoplaza.com](http://www.admoplaza.com) and read more about both sides in Washington Post’s coverage. There is currently a small community of unhoused Washingtonians living in tents on the upper level of the plaza. Some are eager to talk with guests about what’s happening at the plaza. In general though please respect their space.
- Need a bite to eat? The Line Hotel offers a restaurant, bar and coffee shop. Reservations are recommended for dining, but just pop in for a pastry or a coffee. Amsterdam Falafel (2425 18th Street) is a the perfect spot for a quick, cheap and tasty to-go meal.
- Do you know how Adams Morgan got its name?

*The name Adams Morgan was first tossed around in the 1950s, when the principals of two segregated elementary schools in the area—the all-white John Quincy Adams School on 19th Street and the now-defunct all-black Thomas P. Morgan School at 18th Street and California Road—came together to improve education and their schools’ facilities. Their partnership was informal at first, but after the Supreme Court ruled segregation unconstitutional in 1954, they made it official.*

*--Washingtonian Magazine 2008*



**AT HOME EXPERIENCE:** If you choose not to leave home right now, or you live far away, find a familiar place that’s changed since you first encountered it, a spot that helps you consider the evolution of place and time. Bring along a device with which you can access the internet and headphones to tune into the audio. Break the seal inside the box. Begin by exploring the items in the order described in the “**WHAT TO DO WHEN YOU ARRIVE**”. When the instructions ask you to follow Teddy’s map, watch the video here [rorschachtheatre.com/ce-home](http://rorschachtheatre.com/ce-home).



**DON’T MOVE THE REFRIGERATOR\* NOTES:** Wear your mask and maintain distance between others when you can. Please be respectful of residents of the neighborhood. It’s a busy urban area, so don’t leave valuables visible in your car. The neighborhood will be teeming with activity on evenings and weekends, so choose your visit time based on your level of comfort. Weekday day times will be less crowded. If you are not fully vaccinated against covid 19, please defer to our “At Home Experience” above. Also...don’t forget your flu shot!

\* “Don’t move the refrigerator” is a shorthand phrase invented in the early days of Rorschach to mean-- “This should be so obvious we don’t think we have to say it...but we’re saying it anyway.”