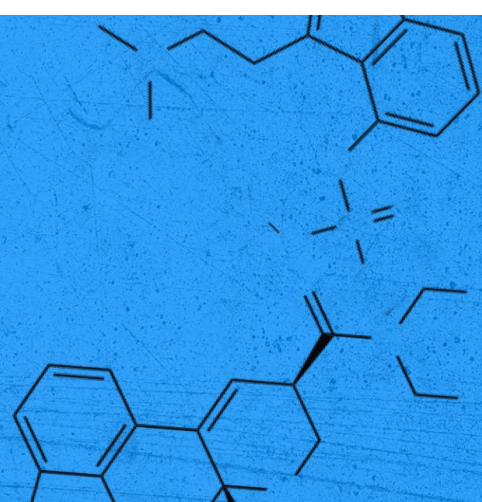


# CHEMICAL EXILE

A PSYCHOGEOGRAPHIES PROJECT

## CHAPTER 3 FRANCISCAN MONASTERY OF THE HOLY LAND IN AMERICA



**YOUR DESTINATION:** Franciscan Monastery of the Holy Land in America in Brookland, 1400 Quincy St. NE, Washington, DC

**GETTING THERE:** There is a parking lot with ample parking in the lot across from the Monastery. The Brookland Metro Station on the red line is a 15 minute walk away.

**HOURS:** The Church at the Monastery is open from 9:00am - 4:00pm daily. The Gardens are open from 9:00am - 4:45pm daily.

**WHAT YOU'LL NEED:** Just your box. And weather appropriate clothing since much of this site is outdoors.



**WHAT TO DO WHEN YOU ARRIVE:** Enter the monastery grounds on foot from the main entrance on Quincy Street. Depending on your preference, you can either A) find a bench and explore the contents of your box all at once, and then explore the grounds and the church, or B) Follow the instructions below to walk in Teddy's footsteps as you explore the box. Pass by the guard station and turn right into the covered portico, follow along towards the church. As you near the building you can grab a bench just outside the portico and read the January 1st journal entry. Then, if you're comfortable doing so, head into the church. (You can also remain on the outside bench if you prefer.) Follow the hallway around to the sanctuary and explore the space. Find a spot to sit and read the January 8th journal entry. Head back outside toward the Quincy Street exit. On the left you'll see a path across the portico and down to the lower garden. Explore as long as you like, and wind up at Lourdes Grotto. Take a seat, read the January 23rd journal entry and then explore the rest of the box contents. Use your drawing kit to capture what you feel in this space or, if you prefer, what Teddy might be feeling. Beauty? Connection? Disconnection? Authenticity? A facade? There's no wrong answer.



**A GREAT PSYCHOGEOGRAPHIC EXPLORATION** includes: **Wandering** as you explore your physical world in a leisurely way, **Subverting** your everyday relationship with the city through a fresh perspective, **Discovering** the present through the prism of the past...and maybe a dash of the occult. As you explore the present, past and fictional world of *CHEMICAL EXILE*, think about where these ideas converge. If you're moved to snap a photo, sketch a vision or jot down a moment in time--do it.

And as always you can share your unique perspective with us at [info@rorschachtheatre.com](mailto:info@rorschachtheatre.com) or tag us on social media (Instagram: @rorschachdc, facebook/rorschachtheatre, #chemicalexile #psychogeographies)

**IF YOU'VE BROUGHT A YOUNG (OR YOUNG AT HEART) RORSCHACHER ALONG:** There's a great playground at the Dwight Mosley-Taft Field and Playground. You can also get out that extra energy at Fort Bunker Hill. Little remains of this temporary earthwork fort which served to protect DC during the Civil War, but there are trails for all to enjoy. A little oasis nestled in the city!

**ACCESSIBILITY:** All outdoor locations and the Monastery Church are accessible. But to visit the lower church, you must be able to use steps. There are more than 20 steps descending, several in the lower church, and at least 20 ascending. If the access is not optimal for you, the At Home video linked below shows the same views.

### OTHER THINGS TO EXPLORE:

*These diversions (probably) don't pertain to our story, but you may enjoy them nonetheless.*

- The Franciscan Monastery offers a variety of tour options including Self Guided Tours of the Upper Church and Gardens from 9am - 4pm Monday - Saturday and Guided Tours by docents and friars which are available by reservation only and include access to the Lower Church and the Catacombs. All guided tours are free, with a suggested donation, and are based on docent availability and must be booked in advance. Tour groups must be between 2 and 30 people in size and registration closes 48 hours prior to each tour. Walk-ins are welcome to join a scheduled tour if space is available however please note that a scheduled tour will not take place if there are no advance registrations. For more information or to make a reservation, head to the website [www.myfranciscan.org/visit/](http://www.myfranciscan.org/visit/)
- Need a bite to eat? Check out **Busboys and Poets** located at 625 Monroe St., NE, or try **San Antonio's Bar & Grill** at 3908 12th St., NE. It's always Taco Tuesday!
- Ready for some secular local art? Visit Brookland Arts Walk, near the Brookland metro. Artist shop hours vary but most are open on Saturday mornings. [www.brooklandartswalk.com](http://www.brooklandartswalk.com)
- Did you know that Brookland and the surrounding neighborhoods are also known as "Little Rome"?

*The area gets its name for the numerous Catholic institutions and organizations built and based around the Catholic University of America. In addition to the Franciscan Monastery of the Holy Land, other major Catholic organizations over the years have included:*

- *Poor Clares of Perpetual Adoration Convent (1954-2017)*
- *Sisters of Life Convent (2017 - present)*
- *Archdiocese for the Military Services, USA (1986)*



**AT HOME EXPERIENCE:** If you choose not to leave home right now, or you live far away, find a place that evokes a sense of transcendence. Maybe a spot that's near water that is colorful or full of texture that considers the layers of history through man made and organic means. Break the seal inside the box. Begin by exploring the items in the order described in the "**WHAT TO DO WHEN YOU ARRIVE**". Watch the video here as you read the journal entries

[rorschachtheatre.com/ce-home](http://rorschachtheatre.com/ce-home).



**DON'T MOVE THE REFRIGERATOR\* NOTES:** Wear your mask and maintain distance between others when you can. Please be respectful of other visitors to the monastery. **Please only use the holy water for its intended purposes.** If you are not fully vaccinated against covid 19, please defer to our "At Home Experience" above. Also...don't forget your flu shot!

\* "Don't move the refrigerator" is a shorthand phrase invented in the early days of Rorschach to mean-- "This should be so obvious we don't think we have to say it...but we're saying it anyway."