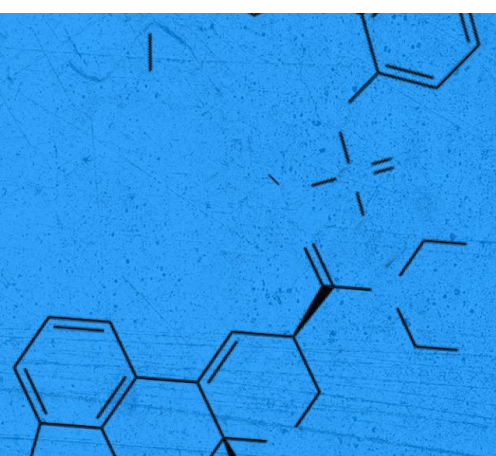


CHEMICAL EXILE

A PSYCHOGEOGRAPHIES PROJECT

CHAPTER 4

SMITHSONIAN NATIONAL
GALLERY OF ART SCULPTURE
GARDEN & THE NATIONAL MALL



➔ **YOUR DESTINATION:** The National Gallery of Art Sculpture Garden, the National Mall and the Arts + Industries Building in Downtown DC starting at southeast corner of 7th St. NW & Constitution Ave. NW.

GETTING THERE: You can find daily metered, three-hour parking on Madison Drive, as well as on nearby Constitution Ave. & 7th St. Please check all street signs when parking, as restrictions vary by day. The nearest Metro stops are Judiciary Square on the Red Line (12 minute walk), Archives-Penn Quarter-Navy Memorial on the Yellow/Green Lines (4 minute walk) and Smithsonian on the Blue/orange/Silver/Lives (8 minute walk).

HOURS: The Sculpture Garden is open 10AM-5PM daily with some extended hours for the Ice Rink (additional info in “Other Things To Explore”), but this chapter is best experienced during daylight hours. The Arts + Industries Building is open Thursday-Sunday 10AM-5:30PM, with extended hours to 7PM on Fridays and Saturdays. No animals, other than service dogs, are permitted in the sculpture garden or museum.

WHAT YOU’LL NEED: Just your box. And weather appropriate clothing.

★ **WHAT TO DO WHEN YOU ARRIVE:**

- Enter the sculpture garden via the entrance located at 7th St. & Constitution Ave. Take the path on the right and head to the opposite corner of the garden, past the Personnage Gothique, Oiseau Eclair. Tucked behind the trees and nestled behind the Pavilion Cafe, you will encounter Orphee. Take a seat on a bench, open your box and find the clear colored envelope. Open it and read the first page beginning with “Theodora”.
- Explore the garden as you like and make your way to the Mall via the Madison Ave. exit, just to the right of the yellow Lichtenstein house and left of the Paine’s otherworldly silver tree.
- Once on the Mall, take a bench facing the Hirshhorn and survey the landscape around. You may be familiar with this space. Think of the concerts, picnics, casual strolls, parades, and national events that have happened here. Look to the left and take in the Capitol and read the 2nd page in the envelope.
- Head across the Mall toward The Carousel. Take in it’s charm. Find a bench and read the final pages in the envelope. Then read the Feb. 19 journal entry. Explore the rest of the box contents.
- When you’re done, if you’re comfortable with indoor spaces, step inside the newly re-opened Arts + Industries Building, just south of the carousel. Wander through their “Futures” exhibition (though July 2022) and consider what alternative futures might lie ahead for Teddy. For you. For all of us.

A GREAT PSYCHOGEOGRAPHIC EXPLORATION includes:

- **Wandering** as you explore your physical world in a leisurely way,
- **Subverting** your everyday relationship with the city through a fresh perspective,
- **Discovering** the present through the prism of the past...and maybe a dash of the occult.

As you explore the present, past and fictional world of *CHEMICAL EXILE*, think about where these ideas converge. If you’re moved to snap a photo, sketch a vision or jot down a moment in time--do it.

And as always you can share your unique perspective with us at info@rorschachtheatre.com or tag us on social media (Instagram: @rorschachdc, facebook/rorschachtheatre, #chemicalexile #psychogeographies)

IF YOU'VE BROUGHT A YOUNG (OR YOUNG AT HEART) RORSCHACHER ALONG: The National Mall is essentially a giant yard with free museums! Depending on the weather, bring outdoor games so young ones can run around or join the Blossom Kite Festival on Saturday, March 26, 2022. Have a young activist in need of inspiration? On October 25, 1958, 10,000 youth participated in the Youth March for Integrated Schools marching down Constitution Ave to the Lincoln Memorial. Dr. Martin Luther King, Jr. served as honorary chairman and Coretta Scott King delivered a speech on behalf of her husband who was recovering from being stabbed in New York City.

ACCESSIBILITY: All outdoor locations on the Mall are accessible but many of the paths include dirt and gravel.

OTHER THINGS TO EXPLORE:

These diversions (probably) don't pertain to our story, but you may enjoy them nonetheless.

- **The Sculpture Garden Ice Rink** is open to March 6 (!!) 11AM-9PM Sunday-Thursday and 11AM-11PM Friday-Saturday. After 5PM access to the Rink through the entrances at Constitution Ave. and Madison Drive near 9th St. More info: <https://www.nga.gov/visit/ice-rink.html>.
- Need to warm up? Duck inside the **Pavilion Cafe** for quick bite and hot beverage! The cafe is open from 10AM-5PM Sunday-Thursday and 10AM-6PM Friday-Saturday.
- Did you know James Smithson, patron of the Smithsonian Institute, never visited the United States while he was alive? In 1904, 75 years after his death in Italy, his body was brought here and laid to rest in a mortuary chapel in the Smithsonian Institution Castle where he remains today.
- **Visiting Mon, Tue, or Wed?:** Currently, only the Castle and American History are open Mon & Tue with a few more options on Wed but hours will likely increase in near future so check <https://www.si.edu/visit/hours> to confirm.
- Fun Facts about the National Mall?
 - *Tiber Creek, a small waterway ran from Capitol Hill to the Washington Monument until it was enclosed underground in 1871.*
 - *There are 47 drinking fountains located on the National Mall.*
 - *All of the trees on the National Mall remove an estimated 492 tons of air pollution with an estimated value of \$2.5 million.*
 - *Three to four tons of trash are collected and removed from the National Mall daily.*



AT HOME EXPERIENCE: If you choose not to leave home right now, or you live far away, find a place that has a known and significant history in your home, neighborhood or town. Perhaps it's a spot from which you can see the vastness of your surroundings. Choose a seat that can serve as the precipice for a walk down memory lane. Break the seal inside the box. Begin by exploring the items in the order described in the **"WHAT TO DO WHEN YOU ARRIVE"**. Watch the video here as you read through the notes and journal entries rorschachtheatre.com/ce-home.

DON'T MOVE THE REFRIGERATOR* NOTES: Wear your mask if you encounter other visitors in close proximity. Leave six feet of distance between yourself and others you may encounter. If you are not fully vaccinated against covid 19, please defer to our "At Home Experience" above. Also...don't forget your flu shot.

* "Don't move the refrigerator" is a shorthand phrase invented in the early days of Rorschach to mean-- "This should be so obvious we don't think we have to say it...but we're saying it anyway."