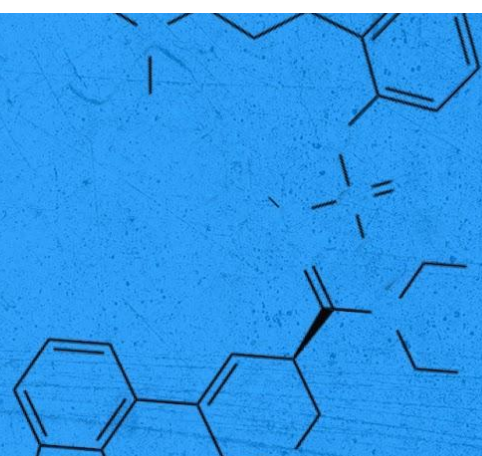


# CHEMICAL EXILE

A PSYCHOGEOGRAPHIES PROJECT

CHAPTER 5  
GLEN ECHO PARK  
GLEN ECHO, MARYLAND



**YOUR DESTINATION:** **Glen Echo Park**, an arts & cultural center at 7300 MacArthur Blvd in Glen Echo, MD. When using map/direction apps, enter parking lot address, 5801 Oxford Road.

**GETTING THERE:** Glen Echo Park is most accessible by car. The main visitor parking lot (5801 Oxford Road) is on the south side of MacArthur Blvd., across from the Glen Echo Shopping Center. Once parked, use the footbridge across the Minnehaha Creek to enter the Park. **Public Transportation:** Montgomery County Ride-On Bus #29 operates daily from Friendship Heights and Bethesda Red Line metro stations.

**HOURS:** The grounds at Glen Echo Park are open from 6AM-1AM (the following day) daily, but we recommend visiting the grounds during daylight hours.

➡ **WHAT YOU'LL NEED:** Your box and maybe your shiny new Reality Rejects Cat pin, just in case you run into any fellow rejects. (We're not setting you up for any awkward role-playing. This is just a chance for fellow Rorschachers to recognize each other.)

★ **WHAT TO DO WHEN YOU ARRIVE:**

1. You'll see a Welcome sign at the park entrance. Cross the footbridge and take a seat on the bench near the rock wall. Open your box and **read the diary entry from Teddy's brother (Frankie)** that begins "I had a dream last night...." Then **take a look at the first three postcards from Dad**.
2. When finished, follow the path into the park. Pass the aquarium on your left, head past the yurts and then the carousel on your right. Look for the red "Cuddle Up" structure. Grab a seat on the edge of the stage or a bench nearby. **Read Teddy's intro notes and the waiver**.
3. Next head over to any picnic table near the Spanish Ballroom and Bumper Car Pavilion to **read Teddy's March 19 journal entry (co-written by Frankie)**.
4. When you're done, use your test tube to collect a sample of something you want to take home to remember this place. Think appealing pebble or fallen leaf – no living creatures please, or things plucked from living trees and plants.
5. And just before you leave the park, take a **look at that last postcard from Dad dated March 19th**.

**A GREAT PSYCHOGEOGRAPHIC EXPLORATION** includes:

- **Wandering** as you explore your physical world in a leisurely way,
- **Subverting** your everyday relationship with the city through a fresh perspective,
- **Discovering** the present through the prism of the past...and maybe a dash of the occult. As you explore the present, past and fictional world of *CHEMICAL EXILE*, think about where these ideas converge. If you're moved to snap a photo, sketch a vision or jot down a moment in time--do it and share with us in one or all of the following ways: Email pix to [info@rorschachtheatre.com](mailto:info@rorschachtheatre.com) or tag us and Glen Echo Park on social media. Instagram: [@rorschachdc](https://www.instagram.com/rorschachdc), [@glenechopark\\_arts](https://www.instagram.com/glenechopark_arts), [facebook/rorschachtheatre](https://www.facebook.com/rorschachtheatre), [facebook/glenechopark](https://www.facebook.com/glenechopark) #chemicalexile #psychogeographies #glenechopark

**IF YOU'VE BROUGHT A YOUNG (OR YOUNG AT HEART) RORSCHACHER ALONG:** Celebrate the Carousel's 101st birthday with a ride! The Carousel opens April 30. Your young Rorschacher might also love playing on the playground! While none of the other rides remain from the amusement park's heyday, you can visit the historic facade and dream about all the adventures of days gone by. If your schedule allows, Adventure Theatre and The Puppet Co. have fantastic children's shows.

**ACCESSIBILITY:** Most of Glen Echo Park is paved pathways with minimal inclines. Dogs are welcome but must be friendly and remain leashed at all times.

### **OTHER THINGS TO EXPLORE:**

*These diversions (probably) don't pertain to our story, but you may enjoy them nonetheless.*

- **Glen Echo Park Aquarium** located just inside the park, the aquarium features live animal exhibits, a live touch tank, a giant sand pit and a pirate ship in a tree! Due to COVID-19, the aquarium is open by appointment. To book a visit email [info@gepaquarium.org](mailto:info@gepaquarium.org).
- **Glen Echo Dances** The park offers dances in all kinds of styles every weekend. Most events start with a complimentary lesson—an excellent one-of-a-kind date night. More info at [www.glenechopark.org](http://www.glenechopark.org)
- Need a snack? Duck inside the **Praline Bakery and Bistro**, open on weekends for a quick bite and beverage! Also visit the **Irish inn at Glen Echo** located at 6119 Tulane Ave, Glen Echo, MD 20812, a short 3 minute walk from the Carousel! This neighborhood gem serves Irish and American comfort food. <https://irishinnglenecho.com/>
- **Did you know?:**
  - The grounds at Glen Echo were used as a Chautauqua in summer 1891. A Chautauqua is best described as an outdoor adult continuing-education summer camp.
  - The Chautauqua Tower (aka the Stone Tower) located near the Glen Echo Park neon sign is the only remaining structure from the Chautauqua era. Built in 1891, and renovated in 2008, it now houses art studios and galleries that are definitely worth a visit. Visit [glenechopark.org](http://glenechopark.org) to check hours and exhibitions.
  - Glen Echo was a site of many civil rights protests in the 1960s due to the amusement park's strict segregation laws. Be on the lookout for signage around the park detailing this history.
  - The Yurt Village, a collection of small huts dating back to 1972, houses Glen Echo Pottery, one of many visual art resident programs. Open weekends April through December, you can purchase items created by the local artists! Other galleries are open on weekends throughout the year.
  - Glen Echo Park is home to 13 resident artists, including two award-winning children's theaters; a nature & aquatic life program for kids; a thriving social dance program; a restored 1921 Dentzel Carousel; numerous art studios and galleries; and hundreds of classes in visual & performing arts. These activities, plus free summer concerts, festivals, and special events bring thousands of visitors to the Park every year!

**AT HOME EXPERIENCE:** If you choose not to leave home right now, or you live far away, find a place that radiates history with conflicting ideologies. A space that while elements may seem new, you can see or sense its past lives just under the surface. Break the seal inside the box. Begin by exploring the items in the order described in the **"WHAT TO DO WHEN YOU ARRIVE"**. Watch the video here as you read through the notes and journal entries [rorschachtheatre.com/ce-home](https://rorschachtheatre.com/ce-home).



**DON'T MOVE THE REFRIGERATOR\* NOTES:** Covid is (thankfully) in retreat (for now) but we encourage you to still wear your mask if you encounter other visitors in close proximity and, if possible, maintain six feet of distance from those not in your party. Please respect the park and don't leave behind trash. Not fully vaccinated against covid 19? Please refer to our "At Home Experience" above.

*\* our shorthand phrase invented in Rorschach's early days to mean-- "This should be so obvious we don't think we have to say it...but we're saying it anyway."*