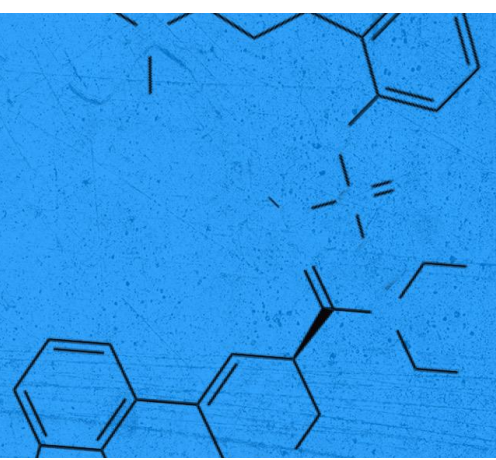


# CHEMICAL EXILE

A PSYCHOGEOGRAPHIES PROJECT

## CHAPTER 7 ANACOSTIA ROLLER SKATING RINK



**YOUR DESTINATION:** Anacostia Roller Skating Rink starting at 1500 Anacostia Drive SE.

**GETTING THERE:** There is a plenty of parking available in the parking lot. You can ride the U2, V7 and V9 Metro Buses to Pennsylvania Ave, SE and Fairlawn Drive or hop the metro to Potomac Ave serviced by the Blue, Orange and Silver lines. Check out specific walking directions from both Metro Rail and Metro Bus stops at (<https://www.nps.gov/anac/planyourvisit/roller-skating.htm>).

➡ **HOURS:** The Anacostia Roller Skating Rink is open daily from dawn until dusk from Memorial Day through Labor Day. If you are interested in free skate rentals, you'll want to visit between 9:00am - 5:00pm.

★ **WHAT YOU'LL NEED:** Your box, your roller skating shoes (if you have them!), maybe some knee pads, and maybe some items for a fun picnic - blankets, snacks, and sunscreen! If you want to try the virgin version of Frankie & Doug's Lavender Spritz at the park, bring along some cold lemonade and club soda (The recipe in your box). Or try it when you get home and add a shot of your favorite bourbon, vodka or tequila (Federal regulations frown on us including that in USPS packages). Also don't forget your Reality Rejects Cat pin, just in case you run into any fellow rejects.

**WHAT TO DO WHEN YOU ARRIVE:** When you arrive at the roller rink, have a seat on the ledge surrounding the skating pavilion. Once you're settled, dive in to Teddy's letter to her brother on the day of his wedding. When you're done, find a spot on the grass or at a picnic table. Maybe you brought a blanket to lounge on. If you plan to make a virgin cocktail, follow the instructions on the recipe card and add in the lemon and lavender in your box. Relax and enjoy this day. In this reality. Right now. Feel free to rent some skates and take a spin around the rink or walk along the river and take in the city.

**A GREAT PSYCHOGEOGRAPHIC EXPLORATION** includes: **Wandering** as you explore your physical world in a leisurely way, **Subverting** your everyday relationship with the city through a fresh perspective, **Discovering** the present through the prism of the past...and maybe a dash of the occult. As you explore the present, past and fictional world of *CHEMICAL EXILE*, think about where these ideas converge. If you're moved to snap a photo, sketch a vision or jot down a moment in time--do it.

Please share your maps and stars with us at [info@rorschachtheatre.com](mailto:info@rorschachtheatre.com) or tag us on social media (Instagram: [@rorschachdc](#), [@AnacostiaNPS](#), [facebook/rorschachtheatre](#), [#chemicalexile](#) [#psychogeographies](#) [#anacostiapark](#) [#rorschachdc](#))

**IF YOU'VE BROUGHT A YOUNG (OR YOUNG AT HEART) RORSCHACHER ALONG:** Let them play at the playground located near the Skating Rink Pavilion while you relax and have a picnic! For more extensive fun, check out the Kenilworth Park and Aquatic Gardens (1550 Anacostia Avenue, NE). From the 500 year old lotus to the shore bird wading and hunting for food, your young one will enjoy the trails through the gardens!

**ACCESSIBILITY:** The Anacostia Skating Rink is accessible and the newly paved Anacostia River Trail that spans the length of the park along the river is also accessible! All restrooms throughout the park are also accessible. Dogs are welcome to tag along on this month's adventure but should remain leashed at all times.

## OTHER THINGS TO EXPLORE:

*These diversions **may or may not** pertain to our story, but you may enjoy them nonetheless.*

- **You're Going Skating, Right?** If you have your own skates, definitely bring them! If not, skate rentals are free to check out with a valid ID, subject to availability. On weekends, rock (and roll!) out to a live music from DJ!
- **Late Skate:** Night owls, join the party from 4-10PM on June 11, July 9, August 13, September 10 & Oct 29 with music, games, dancing, fishing and more!
- **You're Already at the Park!** The Roller Rink is just one aspect of the park! With 3.5 miles of paved trails, picnic and grilling stations, playgrounds, a full 18 piece fitness station (what?) and wildlife, you are in the perfect spot to enjoy a relaxing afternoon/evening.  
(<https://www.nps.gov/anac/index.htm>)
- **Museum Time!** Did you know the Anacostia Community Museum (1901 Fort Place SE) is a part of the Smithsonian? Learn about Anacostia's history and check out their current exhibition Food for the People: eating and Activism in Greater Washington! (<https://anacostia.si.edu/>)
- **Feeling Arty?** Be sure to check out the Anacostia Art Center (1231 Good Hope Road, SE). Visit Mahogany Bookstore, Nubian Huelman's Fashion Boutique, E Life's 100% vegan menu and more! Open Tuesday - Sunday from 12pm - 5pm. (<http://anacostiaartscenter.com/center-spaces/>)
- **Feeling Performing Arts-y?** THEARC houses 14 nonprofit organizations and includes a 365-seat community theater, black box theater, urban farm, regulation-size gymnasium, libraries, computer labs, classrooms, studios for dance, music and visual arts studios, an art gallery, public playgrounds, and an animatronic Frederick Douglas who can answer many of your history question. Find out what's playing on their stages at [www.bbardc.org](http://www.bbardc.org)
- **Did you know?**
  - The Anacostia Roller Skating Rink is the one and only roller skating rink owned and operated by the National Park Service and the only rink in Washington, DC!
  - At the time of its incorporation in 1854, it was stipulated that black and Irish people were not allowed to buy, sell or rent property in Anacostia. Frederick Douglas was the first person to break the rule in 1878!
  - Want to chase history? John Wilkes Booth fled his devious act at Ford's Theatre through Anacostia and you can follow his trail! The trail is flanked with informational signs about Booth, the Civil War, and many other aspects of the neighborhood's history.



**AT HOME EXPERIENCE:** If you choose not to leave home right now, or you live far away, find a place outdoors that inspires joy and community! Settle into a cozy spot, maybe bring a picnic, and open your box. Begin by exploring the items in the order described in the **"WHAT TO DO WHEN YOU ARRIVE"**. Watch the video here [rorschachtheatre.com/ce-home](https://rorschachtheatre.com/ce-home).



**DON'T MOVE THE REFRIGERATOR\* NOTES:** Wear your mask if you encounter other visitors in close proximity. As you maneuver through rink, leave six feet of distance between yourself and others you may encounter as you are able. If you skate, try not to fall down. Rorschach is not liable for any broken bones. If you are not fully vaccinated against covid 19, please defer to our "At Home Experience" above.

\* "Don't move the refrigerator" is a shorthand phrase invented in the early days of Rorschach to mean-- "This should be so obvious we don't think we have to say it...but we're saying it anyway."