

Rorschach

THEATRE *we are what you see.™*



Written by
Randy Baker, Kylos Brannon, Jenny McConnell Frederick,
Douglas Robinson, Shayla Roland, Jonelle Walker

Directed by
Randy Baker

July 7-24, 2022
The R2 Labs at Waterfront Center
800 9th St. SW, Washington, DC

CHEMICAL EXILE: SYNTHESIS

A *PSYCHOGEOGRAPHIES* PROJECT

By Jonelle Walker and Douglas Robinson

from characters and concepts by
Randy Baker, Kylos Brannon, Jenny McConnell Frederick,
Shayla Roland and Jonelle Walker

Directed by
Randy Baker

Set Design

Nadir Bey
Sarah Beth Hall
Grace Trudeau

Sound Design

Veronica J. Lancaster*
Gordon Nimmo-Smith*

Costume Design

Paris Francesca

Lighting Design

Dean Leong
James Morrison

Video Design

Kylos Brannon*

Props Design

Rooster Skylar Sultan
Adam B. Ferguson

Stage Management

Valarie McFatter
Alika Codispoti and Caraline Jeffrey (Associate Stage Managers)
Emma Sloane and Paige Willis (Assistant Stage Managers)

Cast (in Order of Appearance):

TEDDY: Arika Thames
KALLIK: Erik Harrison
VELOURIA: Jen Rabbitt Ring
EVERETT: Baakari Wilder
FRANKIE: Nathanael Hatchett
ELIZABETH: Roz Ward

Box Office Manager: Michael Kyrioglou

House Managers: Selina Tom-Johnson
and Gifty Amponsen

Technical Director: Simone Schneeberg

Master Electricians: Elliott Shugoll & Kat Darnell

Understudies: Selina Tom-Johnson,
Aron Spellane, and Nessa Amherst

* Resident Company Member

Rorschach

THEATRE *we are what you see.™*

Jenny McConnell Frederick and Randy Baker
Artistic Directors

Through uncommon uses of environment and intimate passionate performances, Rorschach Theatre seeks to lure its audiences beyond the limits of ordinary theatrical experience so that they may discover new elements of their own humanity.

Rorschach Theatre tells stories that allow for innovative design and visceral performances. The company treats productions as "installations" that surround the audience with the world of a play. The work centers on the intersection of magic or impossible moments and every day human experiences. Without proselytizing, it provides a complex, intellectual catalyst for self-exploration of challenging subjects.

In addition to its regular season, Rorschach produces "Magic in Rough Spaces," an annual new play development series; "Klecksography," an annual new artist development event (for actors, local playwrights, and directors); and "Fight Camp," a stage combat training program held every summer.

rorschachtheatre.com * facebook.com/rorschachtheatre * [@rorschachdc](https://twitter.com/rorschachdc)



ABOUT THE CAST



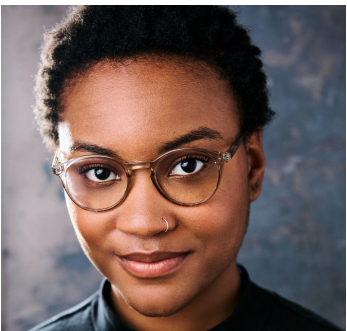
ERIK HARRISON (Kallik) is an actor and writer. His stage acting credits include *Suddenly Last Summer*, *A Misanthrope* (Avant Bard), *ENRON* (4615 Theatre Company), *Dead Dog's Bone*, *Bright Room Called Day* (Nu Sass Productions), *Sing To Me Now* (Rorschach Theatre), *Adult Entertainment* (The Klunch), *'Tis Pity She's a Whore*, *A King and No King* (Brave Spirits Theatre), *King Kirby*, *Completely Hollywood (Abridged)* (Off The Quill). He is a company member at Nu Sass Productions, a frequent drunken buffoon with Shakespeare in the Pub, co-founder of The Coil Project, and a writer/voice actor for The Coil Project Variety Hour, broadcasting biweekly radio serials on WOWD 94.3 FM.



NATHANAEL HATCHETT (Frankie) is an actor, and playwright from Waldorf, Maryland. As a recent graduate of Bowie State University in Theatre Arts, Nathanael's acting credits include: *The Ties That Bind* (Buddy) produced by Catholic University, *You Still Black* (Simon) 4615 Theatre (reading), and *CHILD's PLACE* (James) prod. by Theater Alliance (reading). Nathanael's play *Power Lines* has recently received The Planet Earth's Playwriting Award, and The Hip Hop Theatre Creator Award for a Ten-Minute play from the Kennedy Center American College Theatre Festival at the national level. Nathanael would like to thank his family, friends, and mentors for their love and support.



JEN RABBITT RING (Velouria) has traveled through a lot of different realities. In this one, she's appeared previously in Rorschach's *A Bid to Save the World*, *Separate Rooms* with Theatre 4615, and *She Rode Horses Like the Stock Exchange* with Taffety Punk, to name a few DC highlights. A designated Linklater Voice teacher, Jen teaches Acting and Voice at multiple institutions in addition to coaching privately. MFA, Rutgers University.



ARIKA THAMES (Teddy) is a DC-based theatre artist and educator. Arika spent the last two years performing in virtual readings and queer-led short films in collaboration with other young artists. They were recently seen in Prologue Theatre's *The Revolutionists* and are excited to work with the Rorschach team. She holds a theatre degree from The College of William & Mary where she performed in productions such as *The Children's Hour*, *Top Girls*, and *Our Lady of Kibeho*. Arika is eager to dive even further into the DC theatre scene.

ABOUT THE CAST (CONTINUED)



ROZ WARD (Elizabeth) is an American born actress working and living in the DMV area. Roz has worked in local and international theatre for the past 20 years. Roz was a member of "Quest: Arts for Everyone"; a traveling visual theatre company, consisting of Deaf, Hard of Hearing and hearing performers. In addition to being fluent in American Sign Language, Roz possesses a myriad of artistic skills; (i.e. writing, dialects, signing, Yoga, Stage combat, and Martial Arts). Roz's CREDITS INCLUDE *The Walking Dead: The World Beyond*, *Swagger*, *Pride and Prejudice*, *Tartuffe*, *Hamlet*, etc. Roz has been blessed to work in her field for over 20 years and she will continue to do so for as long as she has breath in her lungs and a spark in her heart. Roz would like to thank her family for their continued loving support.



BAAKARI WILDER (Everett) is excited to debut with Rorschach Theatre in their production of *Chemical Exile: Synthesis!* Past credits include Xavier in *Pipeline* (Studio Theatre), Bryan in *The Few* (Unexpected Stage Company), Roosevelt in *Radio Golf* (Hard Bargain Players) DJ/Guard *Unexplored Interior* (Mosaic Theater Company), Lead actor/tap dancer *Bring in Da Noise Bring in Da Funk* (Ambassador Theater).

ABOUT THE CREATORS

The entire CHEMICAL EXILE experience (Chapters 1-7 and the live show) was written and created by a team of six artists:

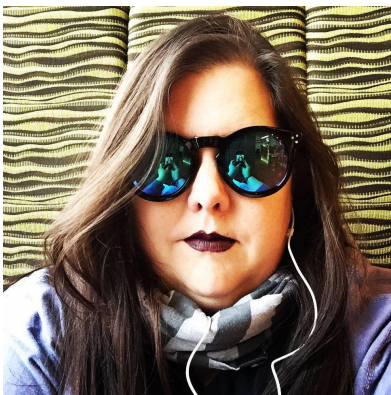


RANDY BAKER is a playwright, director and the co-Artistic Director of Rorschach Theatre in Washington DC. Recent shows he has directed with Rorschach include *Very Still and Hard to See* (Five Helen Nominations including Best Director), *The Electric Baby*, *She Kills Monsters*, *The Minotaur* and *After the Quake*. Recent shows he has directed outside of Rorschach include the seven-room living installation piece, *Hello, My Name Is...* at The Welders (Three Helen Hayes nominations including Best Director), a shadow puppet gamelan-inspired *A Midsummer Night's Dream* at WSC Avant Bard, *Big Love* at Catholic University, *Anon/ymous* at Georgetown University and his own adaptation of *Rashōmon* at American University. Recent plays he has written include the world premieres of *Forgotten Kingdoms* and *Truth & Beauty Bombs* at Rorschach Theatre and workshops and educational productions of *The Burning Road* (Arena Stage), *Monastery* (Theater J), and *Rashōmon* (American University and Spooky Action Theatre). Upcoming is *The Legend of Hang Tuah* at Pointless Theatre (an adaptation of the Malay Legend with shadow puppets and martial arts).

ABOUT THE CREATORS (CONTINUED)



KYLE "KYLOS" BRANNON is a company member with Rorschach and designs video projections. Credits include *410[gone]*, *Reykjavik*, *Annie Jump & the Library of Heaven*, *She Kills Monsters*, and *Toxic Avenger*. On the creative team for Psychogeographies, he serves primarily as video producer, but fills in as graphic designer, illustrator, photoshop wizard, and cocktail creator when needed. Kylos creates live video mash ups for DJs and performs at 930 Club, House of Blues, Ram's Head Live, The Black Cat, Saturn Birmingham, and others. Also, he's a Professor at American University and serves as the Associate Division Director for Film & Media Arts, in the School of Communication.



JENNY MCCONNELL FREDERICK is a Director, Producer, and strong believer in impossible theatre. She's the co-Artistic Director of Rorschach Theatre which she founded in the summer of 1999 with Randy Baker. She's currently directing *FANTASTAGIRL & THE MATH MONSTER* for Adventure Theatre MTC. For Rorschach, she has directed more than a dozen shows including the Helen Hayes Nominated *Voices Underwater* and *God of Vengeance* as well as both of the sold-out runs of Neil Gaiman's *Neverwhere*. In 2015, she conceived and directed *Truth & Beauty Bombs*, an original work based on the Canadian webcomic, "A Softer World." She co-created *Chambers of the Heart* and *MOVE!*, two immersive dance/theatre projects at Word Dance Theatre. She served as Artistic Director of CulturalDC's Source Festival and Mead Theatre Lab Program. In that capacity she oversaw the selection, development and production of more than 200 works for the stage over nearly a decade. Work developed and produced by Jenny at the Source Festival boasts multiple National New Play Network Rolling World Premieres, several American Theatre Critics Association Steinberg Award Nominations, and an Osborn Award Winner. Jenny has directed for Theater J, Capital Fringe Festival, Catholic University and University of Maryland. She's currently a member of Theatre Washington Advisory Board and has served as a mentor director for the Theatre Lab's Honors Acting Conservatory and for the Kennedy Center's American College Theatre Festival and was a featured speaker at the CityWrights Conference in Miami. She graduated cum laude from Virginia Commonwealth University with a BFA in Theatre and briefly joined Mensa for the free pencils. She lives in Takoma, DC with her husband and their long-term collaboration, a son named Thane.



ABOUT THE CREATORS (CONTINUED)



DOUG ROBINSON is a playwright, theater educator, and performer from Sterling, Virginia. He is a MFA Playwriting Candidate at the David Geffen School of Drama at Yale and has worked in Washington, D.C., New York, and Chicago.

His play *Capture the Flag* was selected for the inaugural [Reimagine Theatre for Young Audiences grant](#), a new award created to support the development of theater for young audiences by BIPOC writers. As part of the award, the play was workshopped at [Chicago Children's Theatre](#) in winter 2021.

At Yale, he has workshopped several new plays including *Cactus Queen* and *Story in Our Blood* starring Jason Ralph. Doug's new play *The Figs* received a workshop production as part of the New Play Lab 2022. His play *Soft Apples* was a 2022 O'Neal Semi Finalist and was produced in the 2022 Yale Cabaret season. As Co-Artistic Director of the Yale Summer Cabaret 2021 he curated a three-play season, commissioning playwrights to create three episodic radio plays that premiered virtually this past summer.

His plays have been commissioned at Ally Theatre Company, and Imagination Stage. He has also worked as a teaching artist at Imagination Stage, The Theatre Lab, and Adventure Theatre and he has performed in several plays throughout the east coast.



SHAYLA ROLAND is a theatre producer, administrator, and former stage manager. She served as the Associate Producer for Penumbra Theatre Company in Saint Paul, MN from 2017-19 and the Special Programming Manager at Ford's Theatre in Washington, DC from 2013-16. In these roles, she worked alongside artistic teams in season planning, casting, and curating new audience engagement initiatives. As a DC based stage manager, she's worked for Ford's Theatre, the Source Festival, Adventure Theatre, and Hangar Theatre (NY). Shayla was a member of Theatre Communications Group (TCG)'s inaugural Rising Leaders of Color cohort in 2016. Currently, Shayla works as a PMP certified project manager at a mental health association in the Northern VA.

ABOUT THE CREATORS (CONTINUED)



DR. JONELLE WALKER is a theatre-maker, scholar, and educator. She is a Helen Hayes nominated playwright whose work has been produced with WSC Avant Bard, Flying V, Rorschach Theatre, the Capital Fringe Festival, and elsewhere. She holds a PhD in Theatre and Performance Studies from the University of Maryland. Jonelle is a proud Rorschach Company Member and Associate Producer, as well as an obnoxiously proud Texan.

ABOUT THE ARTISTIC AND PRODUCTION TEAM

RANDY BAKER (Director) See CREATORS bios.



NADIR BEY (Scenic Design) is a DC based Scenic Designer. He loves to challenge the main canon of theater, turning performances into all inclusive and immersive experiences. Selected Credits include *Seven Methods of Killing Kylie Jenner* (Brown), *The Agitators* (Theater at Monmouth), *The Bacchae 2.1* (Hangar), *Maz & Bricks* (Solas Nua), and *Christmas Eve* (ExPats Theatre). Nadir is currently the Associate Production Manager / Technical Director at Mosaic Theater Company.



SARAH BETH HALL (Scenic Design) is a freelance scenic designer in the greater DC area. Selected design credits include: *The Hobbit* (Adirondack Theatre Festival), *Make Way for Ducklings* (Adventure Theatre), Neil Gaiman's *Neverwhere*, *Listen for the Light*, *SuperTrue*, *The Fisherman's Wife* (Know Theatre), *Little Women*, *One Man, Two Guvnors* (Cincinnati Shakespeare Company), *Bonnie & Clyde*, *Pippin*, *Mamma Mia!* (Summer Rep Theatre Festival), *Romeo and Juliet* (Shakespeare LIVE!), *Keeper of the Realm* (The Carnegie). www.SarahBethHallDesign.com

ABOUT THE ARTISTIC AND PRODUCTION TEAM



GRACE TRUDEAU (Scenic Design) is one of the scenic designers for Chemical Exile: Synthesis, she began her career with Rorschach as the virtual designer for *Isosceles* By Nathan Yunkerberg. She is a Washington DC based Scenic Designer and a proud alum of the University of Nebraska with an MFA in Scenic Design. Some of her design credits include, *A Midsummer Night's Dream* and *A Thousand Words* with The Nebraska Rep, *A Nation Grieves* with the National Museum of American History and *Fantastagirl and The Math Monster* with Adventure Theatre MTC. Follow her work at www.gracetrudeaudeesigns.com and @gracetrudeaudeesigns on instagram.

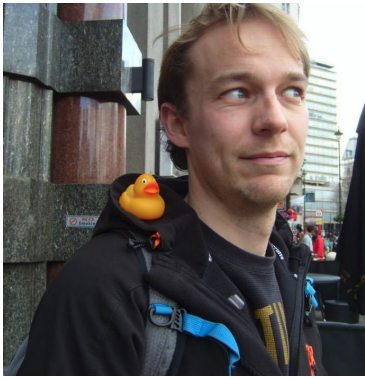


DEAN LEONG (Lighting Design) Dean Leong is a freelance Lighting Designer from the Washington DC area. Recent design credits include: Lighting: *Our Town*, *The Importance of Being Earnest*, and *The Wolves* with CUA Drama Dept. *A Tuna Christmas*, *BURST*, and *Ghost Light* with Parlor Room Theater Company. *The Infinite Tales*, and *Museum 2040* with 4615 Theatre Co. Scenic: *Bright New Boise* with Silver Spring Stage. *The Wolves* with CUA Drama Dept. *Museum 2040* with 4615 Theater Co. He would like to thank his wife and daughter for their love and support. To view more of his work you can visit: www.deanleongdesigns.com



JAMES MORRISON (Lighting Design) is a professional Lighting and Media Designer based out of the Washington DC Area. In the DC area he has designed for the Mosaic Theater Company, NextStop Theatre, Riverside Dinner Theatre, Ravel Dance Company, Greater Washington Ballet, Rorschach Theatre and The Creative Cauldron. Outside the DC area his designs have been seen at The Illinois Shakespeare Festival, Heartland Theatre, and The Clinton Area Showboat to name a few. James hold a BFA in Scenic and Lighting Design from the Shenandoah Conservatory and an MFA in Lighting Design from Illinois State University. To view more of his work please visit his portfolio at <http://jamesmorrisondesigns.com/>

ARTISTIC AND PRODUCTION (Cont.)



GORDON NIMMO-SMITH (Sound Designer) is a Maryland-based sound designer, sound engineer and production manager. He loves getting stuck into weird and wonderful site-specific theatre whenever he can! Love to Alex, Mairi and Mac The Dog.



VERONICA J. LANCASTER (Sound Design) is happy to be back designing with Rorschach Theatre, her artistic home away from home. Recent area credits include *Flying West* at Everyman Theatre, *The Lover* and *The Collection* at Shakespeare Theatre Company, and *That Face* at Baltimore Center Stage. Other regional credits include works with Round House Theater, Theater J, Keegan Theatre, Studio Theater, Metro Stage, WSC Avant Bard, The University of Maryland, and Georgetown University. Veronica holds a BA from the University of Maryland, College Park and an MFA from the University of California, Los Angeles. She is also a Rorschach Theatre company member.



PARIS FRANCESCA (Costume Design) is a Costume Designer and Stylist in the Washington, DC area. Some of her favorite Costume Design credits include: *Fantastagirl* and *The Math Monster* (Adventure Theatre MTC), *Step Afrika!* Magical Musical Holiday Show (Atlas Performing Arts Center), *N* (Keegan Theatre), *Step Afrika! Juneteenth* (Virtual), *Step Afrika! Step Xplosion* (Music Center at Strathmore, Virtual), *The Snowy Day* (Adventure Theatre MTC), *The Mountaintop* (NextStop Theatre) and *Matilda* (NextStop Theatre). Paris is a graduate of Hampton University with a BA in Technical Theatre Arts. She has also earned a MPS in the Business of Fashion from LIM College.

KYLOS BRANNON (Video Design) See *CREATORS Bios*



ROOSTER SKYLER SULTAN (Prop Design) is very excited to be working with Rorschach Theatre on *Chemical Exile: Synthesis*. Some of her recent prop supervisor credits are: *The Nether*; *The Burn*; *Working: the Musical*; & *Electricidad* (Montgomery College). In addition to designing and building props Rooster is passionate about teaching mentoring young people with an interest in technical theatre



ADAM B. FERGUSON (Production Management & Prop Design) is an acclaimed director, arts administrator and advocate. Originally from Virginia, Adam's adventures have taken him from South Africa to New York City to Bahrain, and many places in between. He holds a Bachelor of Arts in Theatre Arts and Rhetoric and Communication Studies from the University of Richmond, as well as a Master of Public Administration and Certificate in Nonprofit Management from Virginia Commonwealth University. Adam is the Production Manager for Rorschach Theatre, as well as the Program Manager for the American High School Theatre Festival and the International Collegiate Theatre Festival hosted annually as part of the Edinburgh Fringe Festival in Scotland, as well as the National Performing Arts Festival by WorldStrides. Other past work experiences include: Artistic Associate at Andy's Summer Playhouse alongside Jared Mezzocchi. Assistant to the Producer of the Met Live in HD at the Metropolitan Opera, Assistant to the Managing Director at Virginia Repertory Theatre, Associate Producer at Firehouse Theatre, Tour Associate at MCT, Inc. in the International Tour Office, and inaugural Arts Editor of Beyond the Arts, powered by theTUNDRA. For full bio and professional directing credits visit: adambferguson.com.

STAGE MANAGEMENT & PRODUCTION TEAM



VALARIE MCFATTER (Stage Manager) is a graduate from American University. Previous credits include *Man Covets Bird* (ASM), *The Tender Land* (Master Electrician), *Next to Normal* (Master Carpenter), and *Pankrac 45* (SM). They are excited for their first show with Rorschach Theater, and for people to see this reality-altering production! They are incredibly thankful for their parents, their partner Fischer, and the incredible SM Team. They quite literally wouldn't have been able to do this show without them. Upcoming shows include *The Lightning Thief* with Wildwood Summer Theater as Production Manager.



CARALINE JEFFERY (Assoc. Stage Manager) is a Southern Maryland native excited to be working on her first production with Rorschach Theatre! Caraline has earned a BA in Theatre and English from Lehigh University, and a graduate certificate in Arts Administration from the University of Massachusetts Amherst. In addition to stage managing, Caraline also works as an administrator for George Mason University's Center for the Arts.



ALIKA CODISPOTI is working with Rorschach. She has stage managed and assistant stage managed numerous productions in the DC area including *Wit* (WATCH nominated), *Emilie: La Marquise du Châtelet Defends Her Life Tonight*, *On the Razzle* (WATCH nominated), *Other Desert Cities* (WATCH winner) all with Silver Spring Stage, and *Friendship Betrayed* and *Orlando* with Avant Bard. She is the associate producer of *Flying V*.



EMMA SLOANE (Summer Intern & Asst. Stage Manager) is a student at the University of Richmond majoring in Theatre and minoring in Communications. This is her first show with Rorschach, working as a member of the stage management team as well as a summer intern. Previous work includes assistant directing and stage management for a cabaret performance at Firehouse Theatre in Richmond and performing, directing, and working as a crew member in UR's Department of Theatre and Dance productions. Emma hopes the audience enjoys the show and wants to thank all of the members of the SM team for being such fabulous people to work with.



PAIGE WILLIS (Asst. Stage Manager) is a stage manager in the DC area and a recent graduate of the University of Richmond, where she stage managed *Appropriate*, *Richard III*, *Blood at the Root*, *Scapino: The Trickster*, and *Standing Together Six Feet Apart*. Her lighting design credits include *Perfect Arrangement*, *Time | In | Space|*, University Dancers' 35th Annual Concert, and *Les Blancs*.



SIMONE SCHNEEBERG (Technical Director) is a local DC scenic designer and technical director. Prior to the pandemic, Simone worked at the Theatre Lab and the Studio Theater, as their technical direction apprentice (*Doubt*, *Pipeline*, *White Pearl*) and as acting technical director for *Pass Over*. Most recently, Simone rejoined the theater community working with Nu Sass on *Twig and Bone* and *To Fall In Love*. Simone has also designed and built for Monumental Theater Company (*Be More Chill*, *Head Over Heels*) and the Rainbow Theatre Project (*Blue Camp*). Simone is excited to join Rorschach on this production and continue a successful summer of theater!

Additional Staff and Artists

VOICE OF ELIZABETH (chapter 2): Deirdra Starnes

VOICE OF TEDDY (Chapter 2): Tyasia Velines

VOICE OF EVERETT (Chapter 6): Christopher Prince

Mark (Velouria's Beach) Carlos Saldaña

Sean the Shitzu: Harper Al-Abossi

Sean's friend: Kennedy Harpo Ferguson

ADDITIONAL BOX PACKING HELP: Linda Bard, Tori Boutin, Cleo Brown, Eric Davis, Sean Flaherty, Thane Frederick, Matt Frederick, Sarah Golden, Michael Kyrioglou, John Ralls, Emily Wertz, Brain Wheeler

"BETA TESTERS" FOR CHAPTERS: Linda Bard, Tori Boutin, Sean Flaherty, Ruby Flaherty-Tripp, Veronica J. Lancaster, Cam Magee, Katie McCreary, Robert Pike, Deb Sivigny, Peggy Sullivan, Catherine Tripp

Rorschach Theatre Staff

Founding Artistic Directors: Jenny McConnell Frederick and Randy Baker

General Manager: John Ralls

Production Manager: Adam Ferguson

Associate Producer and Press Contact: Jonelle Walker

Summer Intern: Emma Sloane

Board of Directors: David Ghatan (Board Chairman), Claire Carlin, Sonali Kumar, John Ralls, Jim Rosenberg, Eileen Vitelli, Randy Baker, Jenny McConnell Frederick

Resident Company Members: Linda Bard, Sara Barker, Tori Boutin, Frank Britton, Robin Covington, Natalie Cutcher, Louis E. Davis, Casey Kaleba, Veronica J. Lancaster, Lee Liebeskind, Cam Magee, Scott McCormick, Katie McCreary, Linz Moore, Gordon Nimmo-Smith, Robert Pike, Megan Reichelt, Debra Kim Sivigny, Christian Sullivan, Sarah Taurchini, Sara Dabney Tisdale, Catherine Tripp, Yasmin Tuazon, Jonelle Walker, Grady Weatherford

CHEMICAL EXILE SPECIAL THANKS:

Jair Lynch Real Estate Partners, Building Creative, Guardian Realty, Mark Hannan, Anne Corbett, Jon Gann, Officer Morris, Artistic Concepts Group, Rachel Davis, Flying V, The Parks at Walter Reed, Tom Pipkin, The Shakespeare Theatre, Bethany Vanderhoff, Tim McConnell, Akiima Price, Jennie Cloud, Mary Abbajay, Michael Ramirez, Jonathan Del Palmer, Clara Ferrari, Lisa Frager and Patrick Tisdale, Station 4, Mike Berman, SWBID, Jessie Himmelrich, Pamela Wolf, Julianne Brienza

KEEP THE MAGIC ALIVE

Disney+ is amazing, you guys. And Netflix. Seriously. It's right there in the tv already. No shoes—or even pants—required.

Rorschach Theatre knows how stiff the competition is when it comes to your entertainment options. But as you know – having spent more than 20 years with our unique brand of theatre – what we do is different. It's our intention to keep engaging you in a way that Hulu never can, bringing you spine-tingling, heartwarming, brain-teasing events that immerse you and engage you.

Please consider making a tax-deductible contribution to Rorschach Theatre today. We can't do it without you.

[MAKE A DONATION BY CLICKING HERE](#)

2022-23
Season Details
Coming soon!



@rorschachdc



@rorschachdc



/rorschachtheatre