

Rorschach
THEATRE *we are what you see.*

**SOMETIMES
THE RAIN,
SOMETIMES
THE SEA**

BY **JULIA IZUMI**

DIRECTED BY **GREGORY KENG STRASSER**

**MARCH 24 -
APRIL 16, 2023**

SOMETIMES THE RAIN, SOMETIMES THE SEA

By Julia Izumi

Directed by
Gregory Keng Strasser

Set Design

Sarah Beth Hall

Sound Design

Veronica J. Lancaster

Costume Design

Alexa Cassandra Duimstra

Lighting Design

Dean Leong

Video Design

Hailey LaRoe

Props Design

Rooster Skylar Sultan

Stage Management

Caraline Jeffrey

Cast:

RAIN CLOUD: Sydney Dionne

BESSIE: Arika Thames

RALMOND: Jordan Brown

MIDI: Janine Baumgardner

EDVARD: Colum Goebelbecker

INA: Jordanna Hernandez

DOLAN: Nick Martin

LITTLE ONE: Jolene Mafnas

UNDERSTUDIES:

Nathanael Hatchett, Daniella Ignacio, Karen Lange,
Aron Spellane, Majenta Thomas

Production Manager: Adam B. Ferguson

Technical Director: Simone Schneeberg

Assistant Stage Manager: Natasha Sánchez

Master Electrician: Ben Harvey

Intimacy Coordinator: Emily Sucher

Set Construction: Sydney Bronaugh, Mae Mironer, Sabrina Sawyer, Christian Sullivan, Christian Wilson / **Electrics:** Logan Fillizola /

A/V Technician: Nick Greene / **Stitcher:** Jennifer Bae

Rorschach's Season is sponsored in part by generous contributions from:
The Eugene M. Lang Foundation, The Morgan Fund, The Nora Roberts Foundation,
The Share Fund, and the DC Commission on the Arts and Humanities

Rorschach

THEATRE *we are what you see.™*

Jenny McConnell Frederick and Randy Baker, Artistic Directors

Through uncommon uses of environment and intimate passionate performances, Rorschach Theatre seeks to lure its audiences beyond the limits of ordinary theatrical experience so that they may discover new elements of their own humanity.

Rorschach Theatre tells stories that allow for innovative design and visceral performances. The company treats productions as "installations" that surround the audience with the world of a play. The work centers on the intersection of magic or impossible moments and every day human experiences. Without proselytizing, it provides a complex, intellectual catalyst for self-exploration of challenging subjects.

Rorschach's newest program - "Psychogeographies" - tells season-long immersive narratives that take participants to lesser-known spots around their city as a story unfolds through letters, artifacts, and objects mailed in monthly chapters.

In addition to its regular season, Rorschach produces "Magic in Rough Spaces," an annual new play development series; "Klecksography," an annual new artist development event (for actors, local playwrights, and directors); and "Fight Camp," a stage combat training program held every summer.

rorschachtheatre.com * [facebook.com/rorschachtheatre](https://www.facebook.com/rorschachtheatre) * [@rorschachdc](https://twitter.com/rorschachdc)



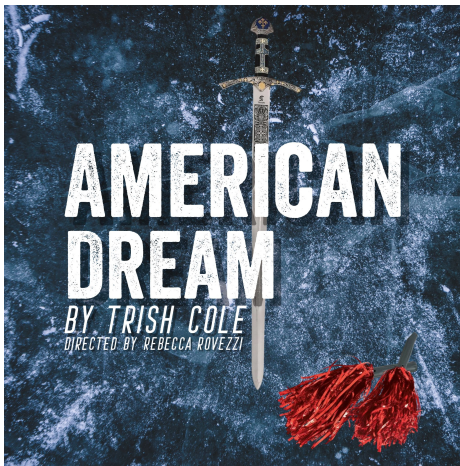
COMING SOON TO RORSCHACH THEATRE

MAGIC IN ROUGH SPACES New Play Lab: FREE Readings of 3 New Plays

rorschachtheatre.com/magic-in-rough-spaces-2023

Rorschach Theatre presents a trio of staged readings of new plays, along with some enhanced design components to give audiences a taste of what a full production might feel like. Audiences will also have the opportunity to talk with artists in a post-show conversation following each play. Prior to the readings, the playwrights will spend three days in DC working with a director, dramaturg, actors and designers to set and achieve goals for their new work.

Readings are free, but reservations are recommended: click on the links below



Five high school cheerleaders attempt to navigate purity and over-sexualization as Adam and Eve revisit their origin story and Joan of Arc battles not only the English, but the high school principal, gender roles, and rape culture. At the intersection of these stories is an intergalactic prophet, traversing time and space who reveals the connections among generations of women, including the women in her own family who left Odessa for America in hopes of finding their own Garden of Paradise...or, the American Dream.

Saturday, 4/1 @ 2:30pm: Lab 2 Theatre @ Atlas

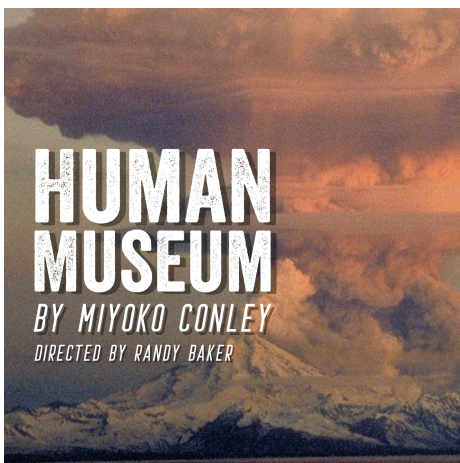
[CLICK HERE TO RESERVE A SEAT](#)



A play with poetry intertwined, *EVEN WHEN THE WORLD BURNS I AM STILL WITH YOU* tells the tragic love story of Freja and Noor, two high schoolers from wildly different backgrounds and life outlooks who meet and fall in love. As they struggle to overcome obstacles in their relationship and mental health issues, the climate change and forest fires in Paradise, CA threaten to destroy their lives.

Sunday, 4/2 at 2:30pm: Lab 2 Theatre @ Atlas

[CLICK HERE TO RESERVE A SEAT](#)

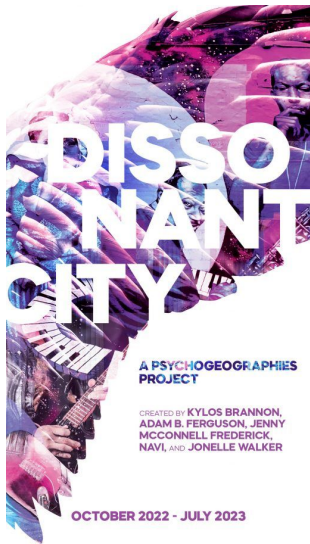


HUMAN MUSEUM begins on the centenary of human extinction and follows three robots who run the Human Museum on Earth. The robots are putting the finishing touches on their largest exhibition yet, about humanity's final days on Earth, when they receive a startling radio call that upends everything they thought they knew about the last days of humanity.

Sunday, 4/2 @ 7:30pm: Lab 2 Theatre @ Atlas

[CLICK HERE TO RESERVE A SEAT](#)

DISSONANT CITY: A PSYCHOGEOGRAPHIES PROJECT



[DISSONANT CITY](#) is a seven-chapter, season-long experience across multiple locations in Washington DC.

"Rorschach Theatre excites the mind and ignites curiosity with unique storylines incorporating the fascinatingly rich history of DC."

— DC Metro Theatre Arts

(about last year's Psychogeographies Project, *Chemical Exile*)

Beyond the bureaucracy and marble columns, there's a steady beat that drives the Nation's Capital. Dive into more than a century of DC music and find out just what it means to be immortal in Rorschach's latest groundbreaking event.

ONGOING through July 2023

<https://rorschachtheatre.com/dissonant-city/>

A Psychogeographies project, DISSONANT CITY harnesses the power of both the built and natural world to create a visceral piece of immersive storytelling. Each month participants receive a map and instructions to travel to a new curated location in the DC area. Along with the map, they'll receive a box of artifacts to engage all five senses while exploring each site with story elements such as letters, music, souvenirs, or photos.

From October through May, each monthly box reveals a new location and a new chapter in the ongoing story. This psychogeographic adventure culminates with the live performance of ANGEL NUMBER NINE in the summer of 2023.

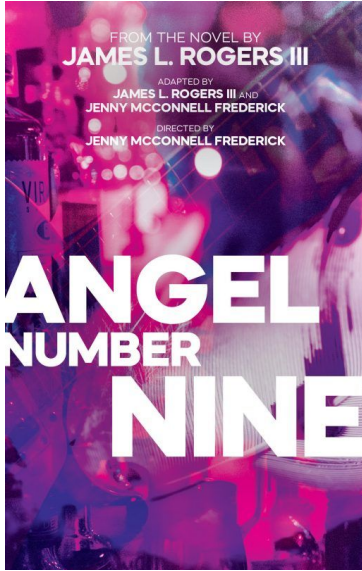
WHAT IS PSYCHOGEOGRAPHIES?

Hundreds of DC-Area audiences joined us for Rorschach's first two Psychogeographies projects, described by the *The Washington Post* as "[a] season-long immersive experience, DISTANCE FREQUENCIES sends audiences on monthly excursions to lesser-traveled Washington-area sites, where landscapes — together with the contents of curated mailed packages — help conjure a mysterious overarching story that is partly set in those locations."

DC Metro Theatre Arts said about the project, "Rorschach Theatre's current production is...an adventure of the mind and, if you wish, the body... The innovative form of art incorporates literature, music, mystery, romance, and DC's highlights and history, all steeped in a hope for a better world... Rorschach Theatre has hit the jackpot with this innovative form of art, incorporating literature, music, mystery, romance, and DC's highlights and history, all steeped in a hope for a better world."



COMING IN JULY...



When Angel meets Cupid in a bar and her band gets an opening slot on a tour, life takes some unexpected turns into a past she tried to leave behind. Part rock show, part booze-soaked road trip through the dive bars and dark clubs of the late 90's east coast music scene, Angel Number Nine shows us that the things we need are sometimes found on the roads we tried to avoid.

[ANGEL NUMBER NINE](#) will serve as the culmination of 2022/2023 Psychogeographies project [DISSONANT CITY](#). The show can be appreciated with or without participation in the seven-chapter, year-long project.

Opening July 2023

rorschachtheatre.com/angel-number-nine



Sometimes the Rain, Sometimes the Sea by Julia Izumi / Photo by Ryan Maxwell Photography

ABOUT THE CAST

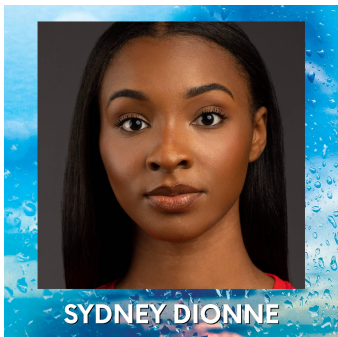


Janine Baumgardner (she/her) (*Midi*) is a dancer, actor, choreographer, and health coach. Recent performance credits include *The Queen's Ball: A Bridgerton Experience* (Netflix/Shondaland/Fever), *Jardín Salvaje* (GALA Hispanic Theatre), *Shhhakespeare Revue*, *The Phantom of the Opera* (Synetic Theater), and *Princess and the Caterpillar*, an original short film based on a Filipino folktale (Synetic Motion Pictures). Choreography credits: *46 Plays for America's First Ladies*, *Little Women* (NextStop Theatre Company), *Cinderella* (Synetic Theater). Janine earned a B.F.A. in Dance from George Mason University, studying modern, ballet, salsa, African dance, choreography, and Spanish. She is a Synetic Theater Company Member. @janinebaumgardner



Jordan Brown (he/him) (*Ralmond*) is absolutely nutty to play Ralmond! He would like to thank his family, friends, and his new crew at Arena Stage! Previous credits include: Steve in *She Kills Monsters* (Rorschach Theatre) Claudio in *Much Ado About Nothing* (Chesapeake Shakespeare Company), Thami Mbikwana in *My Children! My Africa!*, and much more!

See his website at <https://jordanbrown8088.wixsite.com/mysite> (or click the link in his Instagram @Jordan_Le_Great)



Sydney Dionne (she/her) (*Rain Cloud*) is elated to be making her Rorschach debut with this amazing team and beautiful show! Most recently, she has performed with Constellation Theatre: *Once On This Island* (Erzulie); Next Stop Theatre Company: *46 Plays for First Ladies*; *Lucky Stiff* (Dominique du Monaco); Catholic University: *Children of Eden* (Aysha) and *Hamlet* (Ophelia). She is extremely grateful to her family and friends who provide endless support! IG: @thesydneydionne



Colum Goebelbecker (he/him) (*Edvard*) believes in the transformative power of performance to cultivate empathy, catalyze political change, and unleash self-actualization. As a DC-based actor, singer, dancer, musical theater performer, teaching artist, devised theater facilitator, and playwright-in-training with Arena Stage, he channels this belief into all of his work. He recently played Ichabod in *Ichabod: The Legend of Sleepy Hollow* at Creative Cauldron last October. Colum graduated from Georgetown with a government degree and theater minor in December of 2021, and he's since found a home for his passion for theater for social change at the Lab for Performance and Politics. He works as a Project Associate for their award-winning In Your Shoes Program, a theatrical project that brings together intergenerational participants to engage in dialogue about critical issues such as race, political polarization, memory, and identity. He currently administers and co-teaches an In Your Shoes project in collaboration with Georgetown's Center for US-China Dialogue. Colum also works as a bilingual teaching artist for Imagination Stage's Óyeme.



Jordanna Hernandez (she/her) (*Ina*) is a queer, Chicane actor, writer, and educator. She's a company member of 4615 Theatre Company and has performed at Ford's Theatre, Imagination Stage, Olney Theatre, and Spooky Action Theatre. You can also catch her costar in the new AppleTV+ show, "City on Fire". She tells stories of Chicane culture, of daughters and their mothers, of first-generation Americans, socio-economic inequity, of mental health, of queerness, of self-love and healing, and of those yet to be seen. She lives to find light within darkness, transform it into art and use it to heal the world. Jords enjoys taking jokes too far, tennis, weightlifting, spicy food, and flossing.



Jolene Mafnas (she/her) (*Little One*) is an actor based in Washington DC. She grew up on stage as a trained dancer for 13 years, but in college, she found her love of acting. She was most recently seen in Workhouse Performing Arts production of *Women Playing Hamlet*, and finished filming a sci-fi indie movie called *Ghost Planet*, which is set to release in late 2023. Her favorite theater roles she's played are Michelle in *Debris*, Dave in the staged reading of *Hot Pot At The End Of The World*, and Liv in the staged reading of *Lumin*. Jolene is excited to return to Rorschach Theatre playing Little One. Follow her work on instagram @jolenepoliarcomafnas



Nick Martin (he/him) (*Dolan*) is just chuffed to be joining a full Rorschach production for the first time. Previous acting credits include Pointless Theatre Co.: *Rhinoceros*, *King Ubu*; Imagination Stage: *Wake Up*, *Brother Bear*, *Blue*; Constellation Theatre Co.: *The Master and Margarita*; Shakespeare Theatre Co.: *Othello*. He also serves as the Associate Artistic Director of Constellation Theatre Company, where he has received a Helen Hayes Award for Outstanding Direction for his work on *Melancholy Play*. Education: The College of William & Mary @nhmartin0817



Arika Thames (she/they) (*Bessie*) is a DC theatre artist and educator. Recent credits include *The Revolutionists* (Prologue Theatre, Helen Hayes Award nominee), *Chemical Exile: Synthesis* (Rorschach Theatre), and *The Good Doctor* (Washington Stage Guild). Other credits include *Our Lady of Kibeho*, *The Children's Hour*, and *Top Girls*. Catch Arika offstage biking around the city or playing the role of barista. She holds a B.A. in Theatre and Gender, Sexuality, & Women's Studies from The College of William & Mary.

ABOUT THE ARTISTIC TEAM



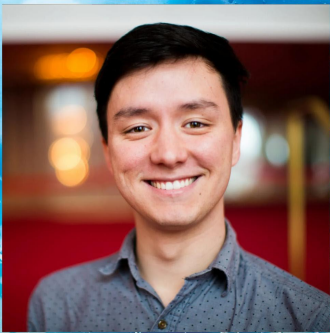
JULIA IZUMI

Julia Izumi (*Playwright*) is a writer, performer, and educator who makes plays, musicals, theatrical nonsense, and everything in between.

Her work has been developed and presented at Manhattan Theatre Club as part of the Ted Snowdon Reading Series, Clubbed Thumb, Bushwick Starr, WP Theater, Berkeley Rep's Ground Floor, SPACE on Ryder Farm, Ojai Playwrights Conference, Oregon Shakespeare Festival, WP Theater, Williamstown Theatre Festival, Trinity Repertory Company, the CAATA National Asian-American ConFest, among others. She has received the NY Society Library's Emerging Women's Artist Grant, a Puffin Artists' Grant, and the inaugural Dr. Kerry English Award from Ojai Playwrights Conference. Her plays have been a finalist for the O'Neill National Playwrights Conference (*An Audio Guide for* *Unsung Snails and Heroes*), and an honorable mention on the Kilroys List (*miku, and the gods.*).

She received her MFA in Writing for Performance from Brown University, and she is the 2011 recipient of the Goddard Rhetorical Prize for excellence in performance at Tufts University, where she earned her B.A. in Drama.

Sometimes The Rain, Sometimes The Sea is receiving its professional world premiere with Rorschach Theatre after numerous acclaimed academic productions with Iowa State University, Northwestern University, American Academy of Dramatic Arts, Cal Poly Tech San Luis Obispo, Williams College, UArts, and Brown University, where it won the Dorry Award for Outstanding New Play in 2018.



GREGORY KENG STRASSER

Gregory Keng Strasser (Director) is a director and writer. His work spans theatre, opera, video games, and film and has been performed in Washington DC; Baltimore and Bethesda in Maryland; Arlington and Winchester in Virginia; and abroad in Bangkok, Thailand; Holstebro, Denmark; and in Ubud, Indonesia.

DIRECTING: *The Infinite Tales* (4615 Theatre), *Song of Achilles* by Madeline Miller (Shenandoah University), *Hin und Zuruck* by Hindemith/Les Mamelles de Tiresias by Poulenc (with Alison Moritz, Peabody Opera Theatre), *410[GONE]* by Frances Ya-Chu Cowhig (Rorschach Theatre), *Doi Nang Non* (K-Bank Siam-Pic Ganesha Theatre), *Dark City: A Solarpunk Noir Video Game* (4615 Theatre), *The Odyssey* (BCPA) and countless new play workshops, readings, short films, commercials and more.

WRITING: Strasser has received commissions in film, theatre, and games from Arena Stage (*May 22, 2020; The 51st State*), 4615 Theatre (*Dark City and The Infinite Tales*), Rorschach Theatre (*Rep Us All*); Adventure Theatre-MTC, and Brighton Center for the Performing Arts.

Strasser serves as the Producing Director for the Helen Hayes-award winning 4615 Theatre, and is currently affiliated with Elevate, serving nonprofit clients across various sectors. He was the 19-20 Allen Lee Hughes Directing Fellow at Arena Stage, assisting directors Molly Smith, Seema Sueko, and Carey Perloff and on a variety of other projects. He completed a year-long stay in Bangkok where he taught English, drama and made theatre with Thai artists and various NGOs. Born in Michigan and raised between Bloomfield Hills and Shanghai, Strasser loves hot, sweltering days; cooking big group meals; and Caroline Givran's fitness videos. You can find out more on www.gregorykengstrasser.com or stalk him on IG: @lil.scallion.pancake



ALEXA CASSANDRA DUIMSTRA

Alexa Cassandra Duimstra (she/her) (Costume Design) is a DC area costume designer and illustrator. Previous work includes, *The Cake* at Prologue Theatre, *A Midsummer Night's Dream* and *Little Women* at NextStop Theatre, *The Madness of Poe* and *Snow Queen* at Synetic Theater, *Birds of a Feather* and *Jingle Journey* at Arts on the Horizon, and *One Flew Over the Cuckoo's Nest* and *Candide* at Gallaudet University. You can see more of her work at alexaduumstra.com



ADAM B. FERGUSON

Adam B. Ferguson (Production Manager) is an acclaimed director, arts administrator and advocate. Originally from Virginia, Adam's adventures have taken him from South Africa to New York City to Bahrain, and many places in between. He holds a Bachelor of Arts in Theatre Arts and Rhetoric and Communication Studies from the University of Richmond, as well as a Master of Public Administration and Certificate in Nonprofit Management from Virginia Commonwealth University. Adam is the Production Manager for Rorschach Theatre, as well as the Program Manager for the American High School Theatre Festival and the International Collegiate Theatre Festival hosted annually as part of the Edinburgh Fringe Festival in Scotland, as well as the National Performing Arts Festival by WorldStrides. Other past work experiences include: Artistic Associate at Andy's Summer Playhouse alongside Jared Mezzocchi. Assistant to the Producer of the Met Live in HD at the Metropolitan Opera, Assistant to the Managing Director at Virginia Repertory Theatre, Associate Producer at Firehouse Theatre, Tour Associate at MCT, Inc. in the International Tour Office, and inaugural Arts Editor of Beyond the Arts, powered by theTUNDRA. For full bio and professional directing credits visit: adamberguson.com.



SARAH BETH HALL

Sarah Beth Hall (she/her) (Set Design) is a freelance scenic designer currently based in the greater DC area. Select local credits: *Chemical Exile: Synthesis* (Rorschach Theatre), *Frankenstein* (NextStop Theatre Company), *Rejoicing in Broken Pieces* (Catholic University), *Make Way for Ducklings* (Adventure Theatre), *Life Jacket, paper backs* (4615 Theatre Co). Select regional credits: *The Caretaker* (Shakespeare Theatre of New Jersey), *God of Carnage* (The Cape Playhouse), *The Hobbit* (Adirondack Theatre Festival), Neil Gaiman's *Neverwhere*, *Listen for the Light*, *SuperTrue*, *The Fisherman's Wife* (Know Theatre), *Little Women* (Cincinnati Shakespeare Company), *Bonnie & Clyde*, *Pippin*, *Mamma Mia!* (Summer Rep Theatre Festival), *Keeper of the Realm* (The Carnegie). sarahbethhalldesign.com



CARALINE JEFFREY

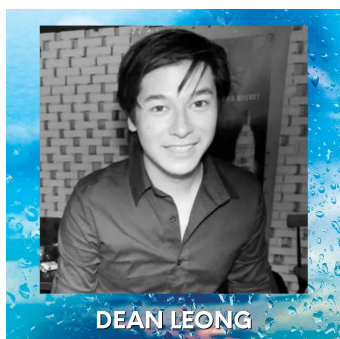
Caraline Jeffrey (she/her) (Season Stage Manager) is an arts professional from Southern Maryland excited to be working on her third production with Rorschach Theatre. Caraline has earned a BA in Theatre and English from Lehigh University, and a graduate certificate in Arts Administration from the University of Massachusetts Amherst. Previous Rorschach credits include *Dracula* and *Chemical Exile: Synthesis*. In addition to stage managing, Caraline also works as an administrator for George Mason University's Center for the Arts.



Veronica J. Lancaster (she/her) (Sound Designer) is happy to be designing with Rorschach Theatre again, her artistic home away from home. Recent area credits include *Flying West* at Everyman Theatre, *The Lover* and *The Collection* at Shakespeare Theatre Company, and *That Face* at Baltimore Center Stage. Other regional credits include works with Round House Theater, Theater J, Keegan Theatre, Studio Theater, Metro Stage, WSC Avant Bard, The University of Maryland, and Georgetown University. Veronica holds a BA from the University of Maryland, College Park and an MFA from the University of California, Los Angeles. She is also a Rorschach Theatre company member.



Hailey LaRoe (she/her) (Projection Design) is excited to be working with Rorschach theater for the first time on this fun and poignant show! Hailey is a lighting and projection designer, based in the DC area since 2018. Her recent projection design credits include *Billy & George* (Avant Bard), *Skin of our Teeth* (Howard Community College), and associate projection design work for *Thurgood* (People's Light), *The day you began* (Kennedy Center TYA). Recent Lighting Credits include; *Julius Cesar* (Avant Bard), *Principe y Principe* (Gala Hispanic theatre), *Learned Ladies* (Classic Theatre of Maryland), and *46 Plays for America's First Ladies* (Next Stop). Enjoy this wild show! Haileylaroesigns.com.



Dean Leong (he/him) (Lighting Design) is a freelance Lighting Designer from the Washington DC area. Recent design credits include: Lighting: *Our Town*, *The Importance of Being Earnest*, and *The Wolves* with CUA Drama Dept. *A Tuna Christmas*, *BURST*, and *Ghost Light* with Parlor Room Theater Co. *The Infinite Tales*, *Museum 2040*, and *Tempered: A Cabaret* with 4615 Theatre Co. *Chemical Exile: Synthesis*, *Dracula: A Feminist Revenge Fantasy*, *Really* with Rorschach Theater Co. *Fitting In* with Arts on the Horizon. He would like to thank his wife and daughter for their love and support. To view more of his work you can visit: www.deanleongdesigns.squarespace.com



Natasha Sánchez (she/her) (Assistant Stage Manager) is delighted to be joining Rorschach Theatre as ASM for the Washington D.C. premiere of *Sometimes The Rain, Sometimes The Sea*. Originally from Southern California, she has enjoyed a vibrantly multifaceted artistic lifestyle as an operatic performer and advocate for musical outreach, in addition to her current parallel passion for Stage Management. Her most recent work highlights include: *Blackbox* by Rickerby Hinds with The Ford's Theatre (PA), *Major Barbara* and *Memoirs of a Forgotten Man* (ASM) with the Washington Stage Guild, and a variety of projects with the Theatre Lab including Shakespeare's *King Lear* (SM/AD).



Simone Schneeberg (she/her)(Technical Director) is a DC scenic designer and technical director. Simone started working in DC at the Theatre Lab as Assistant Technical Director of their summer program before moving to the Studio Theater, as their technical direction apprentice (*Doubt, Pipeline, White Pearl*) and as the acting technical director for *Pass Over*. Simone transitioned to scenic design, designing and building for Monumental Theater Company (*Be More Chill, Head Over Heels*) and the Rainbow Theatre Project (*Blue Camp*) in 2019. Her most recent projects include work with Nu Sass (*Twig and Bone, To Fall In Love*), Edge of the Universe Players (*A Number*), Theater Prometheus (*Motherhood*), and Unexpected Stage (*Fade*). While primarily a scenic designer currently, Simone is a creator and builder at heart and she is thrilled to join Rorschach Theatre on *Sometimes the Rain Sometimes the Sea* as Technical Director!



Emily Sucher (they/she) (*Intimacy Coordinator*) is a multidisciplinary theatre artist and educator. A Helen Hayes Award nominated intimacy director, they have had nearly 30 intimacy choreography and consultation credits in the regional DMV theatre scene, as well as several short films and extensive training from organizations including Intimacy Directors and Coordinators (IDC), Theatrical Intimacy Education (TIE), the National Society of Intimacy Professionals (NSIP), and Intimacy Coordinators of Color (ICOC). Emily completed Level 3 of IDC's certification program (full certification pending) and is a proud member of the organization's very first cohort of intimacy directors (live performance). Also a performer, they are equally passionate about acting and are an Equity Membership Candidate. www.emily-sucher.com



Rooster Skyler Sultan (she/her) (*Properties Design*) Is a Maryland/DC based prop master and scenic artist. Her recent credits include: *Chemical Exile: Synthesis* (Rorschach Theatre); *Rainmaker* (1st Stage); *The Amateurs*; *Dontrell Who Kissed the Sea*; *The Nether*; *Spelling Bee* (Montgomery College); *Blackwell Island* (Signature in the Schools)



ABOUT THE ARTISTIC DIRECTORS



RANDY BAKER (Artistic Director) is a playwright, director and the co-Artistic Director of Rorschach Theatre in Washington DC. Recent shows he has directed with Rorschach include *Very Still and Hard to See* (Five Helen Nominations including Best Director), *Chemical Exile: Synthesis*, *She Kills Monsters*, *The Electric Baby*, *The Minotaur* and *After the Quake*. Recent shows he has directed outside of Rorschach include the seven-room living installation piece, *Hello, My Name Is...* at The Welders (Three Helen Hayes nominations including Best Director), a shadow puppet gamelan-inspired *A Midsummer Night's Dream* at WSC Avant Bard, *Big Love* at Catholic University, *Anon/ymous* at Georgetown University and his own adaptation of *Rashōmon* at American University. Recent plays he has written include the world premieres of *Forgotten Kingdoms* and *Truth & Beauty Bombs* at Rorschach Theatre and workshops and educational productions of *The Burning Road* (Arena Stage), *Monastery* (Theater J), *Between Days* (Theatre Lab), and *Rashōmon* (American University and Spooky Action Theatre). He is working on an adaptation of *The Legend of Hang Tuah* (a retelling of the Malay Legend with shadow puppets and martial arts), collaborating with artists in Singapore and Malaysia.



JENNY MCCONNELL FREDERICK (Artistic Director) is a Director, Producer, and maker of impossible theatre. She's the co-Artistic Director of Rorschach Theatre which she founded in the summer of 1999 with Randy Baker. For Rorschach, she the creation and development of the company's groundbreaking pandemic pivot *Psychogeographies* and has directed more than a dozen shows including the Helen Hayes Nominated *Voices Underwater* and *God of Vengeance* as well as both of the sold-out runs of Neil Gaiman's *Neverwhere*. In 2015, she conceived and directed *Truth & Beauty Bombs*, an original work based on the Canadian webcomic, "A Softer World." She co-created *Chambers of the Heart* and *MOVE!*, two immersive dance/theatre projects at Word Dance Theatre. She served as Artistic Director of CulturalDC's Source Festival and Mead Theatre Lab Program. In that capacity she oversaw the selection, development and production of more than 200 works for the stage over nearly a decade. Work developed and produced by Jenny at the Source Festival boasts multiple National New Play Network Rolling World Premieres, several American Theatre Critics Association Steinberg Award Nominations, and an Osborn Award Winner. Jenny has directed for Theater J, Capital Fringe Festival, Catholic University and University of Maryland. She's served as a member of Theatre Washington Advisory Board and a mentor director for the Theatre Lab's Honors Acting Conservatory and for the Kennedy Center's American College Theatre Festival and was a featured speaker at the CityWrights Conference in Miami. She graduated cum laude from Virginia Commonwealth University with a BFA in Theatre and briefly joined Mensa for the free pencils. She lives in Takoma, DC with her husband and their long-term collaboration, a son named Thane.

Rorschach Theatre Staff

Founding Artistic Directors: Jenny McConnell Frederick and Randy Baker

General Manager: John Ralls

Production Manager: Adam B. Ferguson

Associate Producer and Press Contact: Jonelle Walker

Season Stage Manager: Caraline Jeffery

Board of Directors: David Ghatan (Board Chairman), Claire Carlin, Sonali Kumar, John Ralls, Jim Rosenberg, J. Toscano, Eileen Vitelli, Randy Baker, Jenny McConnell Frederick

Resident Company Members: Linda Bard, Sara Barker, Tori Boutin, Frank Britton, Robin Covington, Natalie Cutcher, Louis E. Davis, Veronica J. Lancaster, Lee Liebeskind, Cam Magee, Scott McCormick, Katie McCreary, Linz Moore, Gordon Nimmo-Smith, Robert Pike, Megan Reichelt, Debra Kim Sivigny, Christian Sullivan, Sarah Taurchini, Sara Dabney Tisdale, Catherine Tripp, Yasmin Tuazon, Jonelle Walker, Grady Weatherford

SOMETIMES THE RAIN SPECIAL THANKS:

Gordon Nimmo Smith, The Parks at Historic Walter Reed, Pipkin Creative, Walnut Street Creative, Pixelumen Lab, Theatre Lab, Optimum Audio, Jason Aufdem-Brinke, Montgomery College Rockville, Washington Stage Guild, Constellation Theatre Company, University of Maryland College Park, Signature Theatre, and Baltimore Center Stage.

rorschachtheatre.com #RorschachDC
#sometimestherain

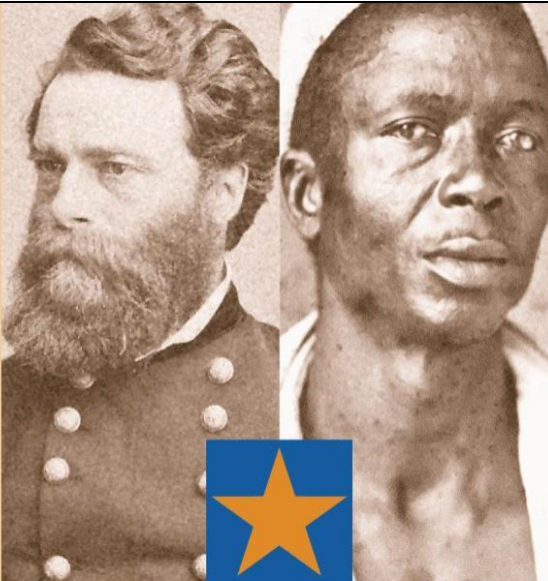


[/rorschachtheatre](https://www.facebook.com/rorschachtheatre)




[@rorschachdc](https://www.instagram.com/rorschachdc)

BEN BUTLER
by
Richard Strand



Directed by Kasi Campbell
Based on a true story
Thru April 16.
Use BUTLER for 50% off
stageguild.org

"Part comedy, part historical drama, and part biography. The beauty of the script...is how it approaches thorny topics [with] wordplay that is by turns sarcastic, droll, and witty"
– NY Times

 WASHINGTON
STAGE GUILD

Rorschach Theatre thanks its contributors:

Season Sponsor

(\$5,000+)

DC Commission on the Arts
and Humanities
The Eugene M. Lang
Foundation
The Morgan Fund
The Nora Roberts Foundation
The Share Fund
Steve Yockey

Production Sponsor

(\$1,000+)

Capitol Hill Community
Foundation
Claire Carlin
Lisa Carr
Anne Corbett
Jeffrey Cunard
Destination DC
David Ghatan
Sonali Kumar
Kyle Lehman
Craig Pascal
The Parks at Walter Reed
Owners Association
Julie Rios
Jim Rosenberg
Jean Schepers
Allison Stockman
J Toscano
Catherine Tripp
Eileen Vitelli
Gerald Yuille

Opening Night Sponsor

(\$500+)

Scott Chew
Franklin Coleman
Sharon Emory
Ben and Leila Fitzpatrick
Linda Greenan
James & Catherine Jordan
Tim & Diane McConnell
Karl Miller
Rahaleh Nassri
Dita Verheij
Beverly & Christopher With

First Read Club

(\$250+)

Eleanor Allen
Rob Colenso
Shirley Couteau
Ben Cross
John Driscoll
Rick & Diane Flaherty
Adam B. Ferguson and
Dr. Yousuf Al-Aboosi
Jeffrey Gee
Elizabeth Goeke
Sandra Hale
Anna Haman
Maggie & John Horn
Stephanie Houseknecht
Brandy Johnson
James Jordan
Ellen Kohn
Karen Lange
Malen Link
Helene Madonick
Sandy Rae McKenzie
Keith Miller
Marc Okrand
Kyoko Pendleton
Stephen Reitz
John Ralls
Rex
Rusty Rowley
Pat Murphy Sheehy
Mark Stalzer
Rose Thun
Alexandra Toma
Gerry Widdicombe

Fan Club (\$100+)

Julianne Brienza
Josh Bryner
Caolin
Jessica Clark
Christopher Connors
Daniel Corle
KC Constanzo
Edward Cragg
Allyson Currin
Gillian Drake
Gerald Epstein

Fan Club (cont.)

Sean Flaherty
Mary Friedmann
Rachana Gang
Jon Gann
Julia Gothe
Richard Gibson
Chris and Jessi
Burgess Gallu
John Harn
Aaron Heinsman
Thomas Holzman
& Alison Drucker
Patti Horrall
Julie Hill
Daniel Hubbell
Kimberly Iwansky
Adam Johnston
Michael Kramer
Wes MacAdam
Holly Middleton
Carl & Undine Nash
Todd Pfrommer
Michael W. Proffitt
David Reinersmann
Cynthia Rosenberg
Scott Schreiber
Howard Shalwitz
Corrine Smith
Lawrence Smith
Geoff Snowman
Koralleen Stavish
John Stoltenberg
Barbara Strack
Sarah Turchini
Fern Tavalin
Stephen & Ashley Taylor
Sara Tisdale
Lynne Toskovich
Edith Tuazon
Barbara Vanderhoff
Peter Vitaliano
William Brian Wheeler
Brandy White

Rorschach Theatre Contributors (continued):

Love & Thanks (Up to \$99)

Barton Aronson
Barely Suitable Games
Monica Batra
Joanna Bellerdine
Sarah Biscardi
Travis Bowerman
Zach Brewster-Geisz
Deangio Bynum
Jennine Carmichael
Dabney Carver
Cassandra
Cat
Michael Chandler
Abigail Colodner
Eric Conrad
Bradley Corallo
Zoe Cowan
Laureen Daly
Colin Davies
Ashi Day
Robert Dickson
Kim Drissel
Joshua Drew
Dylan
Katherine Earle
Hugh Eckert
Mark Farmer
Cary Filsenger
Jessica Fusillo
Martha C. Galvin
Christine Gerbode

Scott Gilkeson
Ryan Glanzer
Nicholas Goodman
Ed Gramlich
Tim, Becky, & Sawyer Gregory
Andrew Harasty
Nicole Hertvik
Jean Louise Holman
Patti Horrall
Aili Huber
Emma Hughes
Fadhma Izri
Elizabeth Jenkins
Jennine
Evan Jensen
Casey Kaleba
Luann Karr
Namdar Kashainian
Jai-Jagdeesh Khalsa
George Koch
Sarah Lessem
Sarah Levine
Nancy Linden
Robert M
Cam Magee
Pamela R Malmgren
Sunil Matte
Gabrielle McCall
Scott McCormick
Patrick McEvoy
Jim McNeill
Amber Meade
Madison Middleton

James Moran
Vince Morris
Happy O'Brien
Gordon Nimmo-Smith
Ahn-Chi Nguyen
Sarah Pheasant
Elizabeth Piercy
Ann Pike
Robert Pike
Marianne Reichelt
Mary L Ristau
Linda Russell
William Sandel
Stacia Schwartz
Guy Seaton
Angela Simmons
Tia Shearer
Andrew Shepherd
Lorraine Smith
Kara Sparling
Jenny Splitter
Marlin Strand
Sylvia
Elizabeth Terry
Damia Torhagen
Jjana Valentiner
Elena Velasco
Jennifer Webb
Ruth Werner
Jordan West
Zachary Wood
Brian Woodburn
Pui-San Yee

KEEP THE MAGIC ALIVE

Disney+ is amazing, you guys. And Netflix. Seriously. It's right there in the tv already. No shoes—or even pants—required.

Rorschach Theatre knows how stiff the competition is when it comes to your entertainment options. But as you know – having spent more than 20 years with our unique brand of theatre – what we do is different. It's our intention to keep engaging you in a way that Hulu never can, bringing you spine-tingling, heartwarming, brain-teasing events that immerse you and engage you.

Please consider making a tax-deductible contribution to Rorschach Theatre today. We can't do it without you.

[CLICK HERE to donate Today](https://rorschachtheatre.com/support)
rorschachtheatre.com/support
or venmo @rorschachdc