

ANGEL NUMBER NINE

July 7-30



from the novel by James L. Rogers III
adapted by James L. Rogers III &
Jenny McConnell Frederick
Original Music by Shawn Northrip

Rorschach
THEATRE *we are what you see.™*

ANGEL NUMBER NINE

**Adapted by James L. Rogers III
and Jenny McConnell Frederick
from the novel by James L. Rogers III
Original Music composed by Shawn Northrip**

Directed by Jenny McConnell Frederick

Set Design
Nadir Bey

Sound Design
Ian Vespermann

Costume Design
Ashlynnne Ludwig

Lighting Design
Marianne Meadows *

Director of Film Content
Kylos Brannon

Props Design
Luke Hartwood

Stage Management
Caraline Jeffrey

Cast:
ANGEL: Kate Kenworthy
CUPID: Robert Bowen Smith
DELIA: Veronica Rose Bundy
CONNIE: Lauren Farnell
JESÚS: James Carlos Lacey
WALLY: Billy Bob Bonson
FRED: Ian Armstrong
CHRISTA: Irene Hamilton
BILLY: Max Johnson
DANI: Bri Houtman
SOPHIE: Constance (CC) Meade

UNDERSTUDIES:
Izzy Gboll, Lydia Gifford, Shana Laski, and Dani Ray

Associate Stage Manager: Natasha Sánchez
Production Manager: Germar Townsend
Technical Director: Christian Sullivan
Master Electrician: Malory Hartman
Assistant Costume Designer: Cody Von Ruden

Music Director: Shawn Northrip
Intimacy Coordinator: Emily Sucher
House Manager: Tabitha Littlefield
Box Office Manager: Michael Kyrioglou
** Member United Scenic Artists*

**This project is produced in partnership with
Lerner Enterprises and The Golden Triangle BID
and with support provided by the DC Commission for the Arts and Humanities.**

Rorschach's Season is also sponsored in part by generous contributions from:
The Eugene M. Lang Foundation, The Morgan Fund, The Nora Roberts Foundation, and The Share Fund

Rorschach

THEATRE *we are what you see.™*

Jenny McConnell Frederick and Randy Baker, Artistic Directors

Through uncommon uses of environment and intimate passionate performances, Rorschach Theatre seeks to lure its audiences beyond the limits of ordinary theatrical experience so that they may discover new elements of their own humanity.

Rorschach Theatre tells stories that allow for innovative design and visceral performances. The company treats productions as "installations" that surround the audience with the world of a play. The work centers on the intersection of magic or impossible moments and every day human experiences. Without proselytizing, it provides a complex, intellectual catalyst for self-exploration of challenging subjects.

Rorschach's newest program - "Psychogeographies" – tells season-long immersive narratives that take participants to lesser-known spots around their city as a story unfolds through letters, artifacts, and objects mailed in monthly chapters.

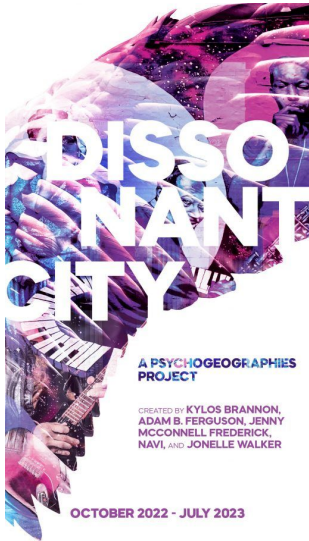
In addition to its regular season, Rorschach produces "Magic in Rough Spaces," an annual new play development series; "Klecksography," an annual new artist development event (for actors, local playwrights, and directors); and "Fight Camp," a stage combat training program held every summer.

rorschachtheatre.com * facebook.com/rorschachtheatre * [@rorschachdc](https://twitter.com/rorschachdc)



DISSONANT CITY: A PSYCHOGEOGRAPHIES PROJECT

Created by Kylos Brannon, Adam Ferguson,
Jenny McConnell Frederick, Navi, and Jonelle Walker



[DISSONANT CITY](#) is a seven-chapter, season-long experience across multiple locations in Washington DC.

"Rorschach Theatre excites the mind and ignites curiosity with unique storylines incorporating the fascinatingly rich history of DC."

— DC Theater Arts

(about last year's Psychogeographies Project, *Chemical Exile*)

Beyond the bureaucracy and marble columns, there's a steady beat that drives the Nation's Capital. Dive into more than a century of DC music and find out just what it means to be immortal in Rorschach's latest groundbreaking event.

It's not too late to jump in!

The chapters can be experienced ANY TIME:

<https://rorschachtheatre.com/dissonant-city/>

You can purchase the entire series at the box office tonight.

A Psychogeographies project, DISSONANT CITY harnesses the power of both the built and natural world to create a visceral piece of immersive storytelling. Each chapter provides instructions to travel to a new curated location in the DC area and a box of artifacts to engage all five senses while exploring each site with story elements such as letters, music, souvenirs, or photos.

ANGEL NUMBER NINE tells a story connected to the seven chapters. For more about this year's experience, check out the excellent wrap-up article from *DC Theater Arts*:

["Rorschach's inventive *Dissonant City* to culminate with *Angel Number Nine*"](#)

WHAT IS PSYCHOGEOGRAPHIES?

Hundreds of DC-Area audiences joined us for Rorschach's first two Psychogeographies projects, described by the *The Washington Post* as "[a] season-long immersive experience, DISTANCE FREQUENCIES sends audiences on monthly excursions to lesser-traveled Washington-area sites, where landscapes — together with the contents of curated mailed packages — help conjure a mysterious overarching story that is partly set in those locations."

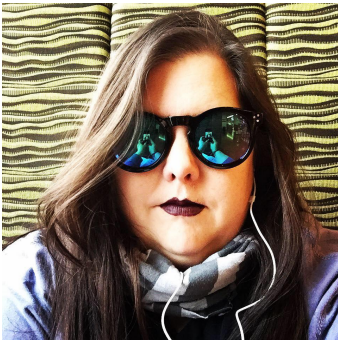
DC Theater Arts said about the project, "Rorschach Theatre's current production is...an adventure of the mind and, if you wish, the body... The innovative form of art incorporates literature, music, mystery, romance, and DC's highlights and history, all steeped in a hope for a better world... Rorschach Theatre has hit the jackpot with this innovative form of art, incorporating literature, music, mystery, romance, and DC's highlights and history, all steeped in a hope for a better world."



ABOUT THE CREATORS



James L. Rogers III (Novelist / Co-Adapter) is a writer, lyricist, voice over artist and professional problem solver. He is a former Lucas Arts writer-in-residence and winner at the Source Theater Festival. His short plays and poetry have been featured on numerous DC stages, some of which he helped construct. His work explores the darker side of human nature through irreverence and humor.



Jenny McConnell Frederick (Director / Co-Adapter) is a Director, Producer, and maker of impossible theatre. She's the co-Artistic Director of Rorschach Theatre which she founded in the summer of 1999 with Randy Baker.

For Rorschach, she oversaw the creation and development of the company's groundbreaking pandemic pivot *Psychogeographies* and has directed more than a dozen shows including the Helen Hayes Nominated *Voices Underwater* and *God of Vengeance* as well as both of the sold-out runs of Neil Gaiman's *Neverwhere*. In 2015, she conceived and directed *Truth & Beauty Bombs*, an original work based on the Canadian webcomic, "A Softer World." She co-created *Chambers of the Heart* and *MOVE!*, two immersive dance/theatre projects at Word Dance Theatre. She served as Artistic Director of CulturalDC's Source Festival and Mead Theatre Lab Program. In that capacity she oversaw the selection, development and production of more than 200 works for the stage over nearly a decade. Work developed and produced by Jenny at the Source Festival boasts multiple National New Play Network Rolling World Premieres, several American Theatre Critics Association Steinberg Award Nominations, and an Osborn Award Winner. Jenny has directed for Theater J, Capital Fringe Festival, Catholic University and University of Maryland. She's served as a member of Theatre Washington Advisory Board and a mentor director for the Theatre Lab's Honors Acting Conservatory and for the Kennedy Center's American College Theatre Festival and was a featured speaker at the CityWrights Conference in Miami.

She graduated cum laude from Virginia Commonwealth University with a BFA in Theatre and briefly joined Mensa for the free pencils. She lives in Takoma, DC with her husband and their long-term collaboration, a son named Thane.



Shawn Northrip (Composer / Music Director) is a playwright and composer with a penchant for writing rock musicals. His most notorious show is *Titus X*, a punk rock Titus Andronicus which just celebrated 20 years of life, most recently as presented by the Brazen-faced Varlets, where it also ended up as a tattoo on the lead's body, which is the highest honor the show has received. Shawn also teaches high school, has membership in the Dramatists Guild, was an Inaugural member of Playwrights' Arena, and brags about his NYU MFA. Shout out to Boinkee Bonson for never turning down a gig. Love to Fern and Lia.

ABOUT THE CAST



Ian Armstrong (He/Him) (Fred) is a proud DC native, holding a BFA from The Corcoran School of Art, and an MFA from The Catholic University of America. Most recently he was seen in Solas Nua's *Playboy of The Western World*, for which he earned a Helen Hayes nomination for supporting performer. He was last seen at Rorschach in *Sing to Me Now*, directed by Jenny McConnell Frederick. Ian has also acted at Arena Stage, The Shakespeare Theatre, and Taffety Punk Theatre. He has served on the faculty of The Duke Ellington School of the Arts, and Kennedy Center Theatre for Young People. Ian is a current board member at Taffety Punk Theatre.



Billy Bob Bonson (He/Him) (Wally) is a musician and long time friend of the composer, and as a result, plays all of his shows.



Robert Bowen Smith (He/Him) (Cupid) is a DC based actor and Helen Hayes nominated choreographer. Select theater credits include: *Reykjavik*, *Neverwhere* (Rorschach Theatre), *Shakespeare in Love*, *Ripcord* (Keegan Theatre), *The Raid* (Theater Alliance), *Host and Guest*, *Wizard of Oz*, *Hunchback of Notre Dame*, *Picture of Dorian Gray*, *The Three Musketeers* (Synetic), *in a word*, *Peekaboo!* (Hub Theater), and *Escape from Peligro Island* (Imagination Stage).



Veronica Rose Bundy (She/Her) (Delia) Veronica's last time on the theatrical stage was as lead guitarist for the 2011 Capital Fringe Festival production *On the Rag to Riches*, and she's excited to be back as Delia in *Angel Number Nine*! She's spent most of her time in the past 12 years playing guitar at various dive bars in the mid-Atlantic, and is currently lead guitarist for the post-hardcore band In Shallow Seas. When she's not playing music, she's hanging out with her family and friends, reading, and preparing for her next Dungeons and Dragons session.



Lauren Farnell (They/Them) (Connie) is super stoked to be in *Angel Number Nine*! A first-timer at Rorschach, but a seasoned member of DC's theatre scene for several years, Lauren has been seen in Monumental Theatre Company's *Head Over Heels*, Imagination Stage's *The Lion*, *The Witch and the Wardrobe*, and many more. During the pandemic, Lauren decided to pursue a Masters of Arts in Theatre and Performance Studies, and just finished this May, 2023!! Lauren's thesis focused on performance studies; specifically the performance of queer, and gender-fluid identities in reggaetón. Lauren is super excited to make it back to the stage after grad school! Many thanks to Rashel + the fam for the support.



Irene Hamilton (She/Her) (Christa) recently graduated from James Madison University School of Theatre and Dance. She is a performer and company member at both Arts on the Horizon (*Birds of a Feather*, and more) and Synetic Theatre (*Treasure Island*, *Snow Queen*, *Cinderella*, *Servant of Two Masters*, *A Midsummer Night's Dream*, *Host & Guest*, *Dracula*, *Beauty & the Beast* and more, including self-produced virtual works for the Body of Mind Laboratory). She has also performed in the Kennedy Center Concert Reading Series (*Voir Dire*), and the Madison New Works Laboratory (*Divided: The Musical*, *Basement Demons* and *Trailer Saints*).



Bri Houtman (They/She) (Dani) is a queer actor based in the DMV area who is thrilled to be working with Rorschach Theatre again! They received their B.A. from the George Washington University in theater and criminal justice. Credits include: Rorschach Theater: *Dracula: A Feminist Revenge Fantasy*, *Really* (Lucy Westenra), Endangered Species Theater Project: *Hamlet* (Ophelia) and *Becky's New Car* (Kenni), Faction of Fools: *Love Like Tuesday* (Jill), We Happy Few: *Iphigenia* (Eriphyle). Coming this October: We Happy Few: *Kill the Ripper* (Pudding).



Max Johnson (He/Him) (Billy) is a DC local working actor, teaching artist, electrician, and deviser. Recent theater credits include *Mankind* (Iron Crow Theatre), *Spies 2* (Imagination Stage), *WVL Radio Presents: It's A Wonderful Life* (Immediate Theatre Project), *A Midsummer Night's Dream* and *A Raisin in the Sun* (Olney Theatre's National Players Tour 72), and *Next Time* (Candlehouse Collective.) He will be starring in the upcoming feature *Questions* by Outlaw Dawn Productions (look for it in the winter!) Max graduated from Wesleyan University with a BA in Theatre and a BA in History. More information about Max can be found at his website: maxjohnsonactor.com



Kate Kenworthy (They/Them) (Angel) is delighted to be making their debut at Rorschach Theatre! Most recently they've appeared in the staged readings *Even When the World Burns* (Freja) for Rorschach's Magic in Rough Spaces New Play Lab, and *In McClintock's Corn* (Barbara McClintock) for the 20th Anniversary Festival of Washington Women in Theatre. They graduated from Sarah Lawrence College in New York, with a semester of studies at the British American Drama Academy in London. Their acting coach is Professor E. Vera J Katz, Howard University. You can catch them next in *The Merry Wives of Windsor* at the Maryland Renaissance Festival!



James Carlos Lacey (He/Him) (Jesús) is a Paraguayan actor that grew up in Great Britain. He is also a playwright, director and singer-songwriter. Originally, a History Major from the University of East Anglia, England, he has performed globally and received his Master's at the Royal Academy of Dramatic Art, London where he co-founded The Undertow Theatre Company. He has just completed his MFA at the Academy for Classical Acting with the Shakespeare Theatre Company in D.C. Regional: *Romeo & Juliet* (Chesapeake Shakespeare Company), *Playboy of the Western World* (Solas Nua), *Merchant of Venice* (Shakespeare Theatre Company), International: *Hamlet* (Tower Theatre), *Antony & Cleopatra* (Tower Theatre), *Orphée* (Bloomsbury Festival), *The Bacchae* (Festival of Ancient Messene). FILM: *Butcher, The Queue*.



Constance (CC) Meade (She/Her) (Sophie) is from Falls Church, Va. She is currently a rising Junior in the University of Michigan's School of Music, Theatre and Dance. She has most recently appeared in the University's production of *1989*, directed by Zoe Aja Moore, where she played Sofia. You may also have seen her in a recent Umich FTVM Film as Gracie in *Boys and Husbands*. CC is so excited to be making her Rorschach Theatre debut as well as her DC Theatre debut. She is grateful to the whole team, her family, her friends, and her dog.

ABOUT THE CREATIVE TEAM



Nadir Bey (He/Him) (Set Designer) is a freelance designer around the DMV area. After receiving his BFA in Design at UNCSA he was a Design Fellow at the Hangar Theater in Ithaca, NY, and a Kenan Fellow at the Kennedy Center in Washington, DC. Select Credits include *Maz & Bricks* and *The Playboy of the Western World* at Solas Nua, *The Rainmaker* at 1st Stage Theater, *Chemical Exile* at Rorschach Theater, *Sense & Sensibility* at Imagination Stage, and *Little Women* at NextStop Theater. Instagram: @studio.yera



Kyle "Kylos" Brannon (He/Him) (Video Producer / Designer) is an Assistant Professor / Associate Director of the Film and Media Arts Division at American University. A company member with Rorschach Theatre, he has been designing video projections since 2018. Credits include *410[gone]*, *Annie Jump and the Library of Heaven*, *Reykjavik*, and *Toxic Avenger The Musical*. Occasionally he can be seen onstage as a VJ, mixing live video projections for DJ parties and has performed at many venues throughout the East Coast, and regularly at DC's 930 Club. Recently Kylos edited a short documentary that was included in The Smithsonian's Futures Exhibit, designed video projections for an all deaf production of *Rosencrantz and Guildenstern are Dead*, and traveled to Ethiopia to mentor young filmmakers at Zelleman Studios, as part of the Smartphilm Festival.



Caraline Jeffrey (She/Her) (Season Stage Manager) is an arts professional from Southern Maryland excited to be working on her fourth production with Rorschach Theatre. Caraline has earned a BA in Theatre and English from Lehigh University, and a graduate certificate in Arts Administration from the University of Massachusetts Amherst. Previous Rorschach credits include *Sometimes the Rain*, *Sometimes the Sea*, *Dracula*, and *Chemical Exile: Synthesis*. In addition to stage managing, Caraline also works as an administrator for George Mason University's Center for the Arts.



Luke Hartwood (He/Him) (Prop Designer) is a queer Asian-American designer and artisan based in unceded Manahoac land "Northern Virginia". He is a recent graduate of George Mason University and is thrilled to be designing this blast of a show with Rorschach. Recent credits include Olney Theater Center: *A Nice Indian Boy*, *Kinky Boots*; George Mason University: *You're a Good Man*, *Charlie Brown*, *The Hunchback of Seville*, *Head Over Heels*; Washington Stage Guild: *Endgame*; City of Fairfax Theater Company: *True West*; GALA Hispanic Theater: *Kumanana*. lukehartwood.com



Malory Hartman (She/Her) (Master Electrician) is going back to her roots playing bass in garage bands with this show. Though her rock star days are behind her, she is an electrician and lighting designer in DC and beyond. maloryhartman.com



Ashlynn Ludwig (She/Her) (Costume Designer) is thrilled to rock and roll with Rorschach once again! She is DC-based costume designer- local credits include *P.Nokio* at Imagination Stage, *Lost Girl* at American University, *Little Women: The Musical* at University of Maryland, and assistant costume design on Rorschach's *Dracula*. Associate design credits include *Pacific Overtures* at Signature Theatre, *People, Places, and Things* at Studio Theatre, and *Quixote Nuevo* at Roundhouse Theatre. Other credits include *Hunchback of Notre Dame*, *The Drowsy Chaperone*, and many others as the Resident Costume Designer at the Cumberland County Playhouse. [@ashludwigcostumes](https://twitter.com/ashludwigcostumes)

Marianne Meadows (Lighting Designer) is delighted to be back at Rorschach Theatre after designing *The Illusion* and *A Clearing in the Woods*. She is a resident designer for Solas Nua (*Johnny Meister and the Stitch*, *The Smuggler*), Open Circle Theatre (where she also serves as a board member), Washington Stage Guild, Scena Theatre, Theatre Lab, and Histrio. Previous productions include *Eleanor*, *The Blackguards* (Fords Theatre), *Quills* (Helen Hayes nomination), *The Dead Monkey* (Woolly Mammoth). *Old Wicked Songs* (Helen Hayes nomination), *Desk Set* (Studio Theatre). *The Chosen* (Theatre J, Helen Hayes nomination). *The Adding Machine* (Helen Hayes nomination, Washington Jewish Theatre). *The Magical Musical Holiday Step Show*, DrumFolk National Tour (Step Afrika!). Marianne is a member of United Scenic Artists Local #829. BA Sarah Lawrence College, MFA University of Washington. Additional training at Lester Polakovs Studio and Forum of Stage Design, NYC. Recipient of Theatre Lobby's Mary Goldwater Award, 2004.



Natasha Sánchez (She/Her) (Assistant Stage Manager) is absolutely ecstatic to be rejoining Rorschach Theatre for its production of *Angel Number Nine*. Originally from Southern California, she has enjoyed a vibrantly multifaceted artistic lifestyle as an operatic performer and advocate for musical outreach, in addition to her current parallel passion for Stage Management. Recent credits include: Constellation Theatre: *The School for Lies*; Rorschach Theatre: *Sometimes the Rain, Sometimes the Sea*; Ford's Theatre: *SHOUT SISTER SHOUT!*, *Blackbox* by Rickerby Hinds; Washington Stage Guild: *Major Barbara*, *Memoirs of a Forgotten Man*; Theatre Lab: *King Lear*.



Emily Sucher (They/She) (*Intimacy Coordinator*) is a multidisciplinary theatre artist and educator. A Helen Hayes Award nominated intimacy choreographer, they have had 30+ intimacy direction and consultation credits in the regional DMV theatre scene, as well as several short films and extensive training from organizations including Intimacy Directors and Coordinators (IDC), Theatrical Intimacy Education (TIE), the National Society of Intimacy Professionals (NSIP), and Intimacy Coordinators of Color (ICOC). Emily completed Level 3 of IDC's certification program and is a proud member of the organization's very first cohort of intimacy directors (live performance). Upcoming: *Faust* (July) and *Don Giovanni* (August) with Wolf Trap Opera. www.emily-sucher.com

Christian Sullivan (He/Him) (Technical Director) is an idiot that spreads himself too thin. That is, to say, that he got a theatre degree in 2k6, and continues to shoot himself in the foot. Name a theatre. He's probably done something there.



Germar Townsend (He/Him) (Production Manager) is Southern by birth, and bi-coastal by choice. His interdisciplinary education includes three degrees that focused on music, film, production, media, and law (#FangsUp, #STATEnotSouthern, #CUintheCity, #Beardown). After over 20 years in audio, video production, and non-profit work, he returned to his first love--theatre. For the past six years, he's worked in theaters as a technical director, production manager, and production director, proving that you can indeed go home again.

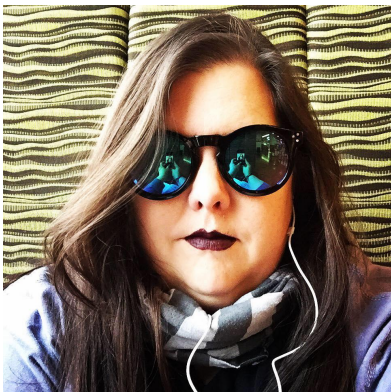


Ian Vespermann (Sound Designer) is a sound designer who explores the power of sound as a storytelling device. Experimentation is a driving force in his work, as he strives to find new avenues of expression. He enjoys collaborating with a team of artists and technicians to find creative solutions and design fulfilling experiences. Ian attended University of North Carolina School for the Arts and During his time there he collaborated with a diverse group of artists and technicians across many mediums and genres including Dance, Film, Live Theatre, Musical Theatre, Concerts, Radio Drama, Devised Theatre, and Art Installations.

ABOUT THE ARTISTIC DIRECTORS



RANDY BAKER (Artistic Director) is a playwright, director and the co-Artistic Director of Rorschach Theatre in Washington DC. Recent shows he has directed with Rorschach include *Very Still and Hard to See* (Five Helen Nominations including Best Director), *Chemical Exile: Synthesis*, *She Kills Monsters*, *The Electric Baby*, *The Minotaur* and *After the Quake*. Recent shows he has directed outside of Rorschach include the seven-room living installation piece, *Hello, My Name Is...* at The Welders (Three Helen Hayes nominations including Best Director), a shadow puppet gamelan-inspired *A Midsummer Night's Dream* at WSC Avant Bard, *Big Love* at Catholic University, *Anon/ymous* at Georgetown University and his own adaptation of *Rashōmon* at American University. Recent plays he has written include the world premieres of *Forgotten Kingdoms* and *Truth & Beauty Bombs* at Rorschach Theatre and workshops and educational productions of *The Burning Road* (Arena Stage), *Monastery* (Theater J), *Between Days* (Theatre Lab), and *Rashōmon* (American University and Spooky Action Theatre). He is working on an adaptation of *The Legend of Hang Tuah* (a retelling of the Malay Legend with shadow puppets and martial arts), collaborating with artists in Singapore and Malaysia.



JENNY MCCONNELL FREDERICK (Artistic Director) is a Director, Producer, and maker of impossible theatre. She's the co-Artistic Director of Rorschach Theatre which she founded in the summer of 1999 with Randy Baker. For Rorschach, she oversaw the creation and development of the company's groundbreaking pandemic pivot *Psychogeographies* and has directed more than a dozen shows including the Helen Hayes Nominated *Voices Underwater* and *God of Vengeance* as well as both of the sold-out runs of Neil Gaiman's *Neverwhere*. In 2015, she conceived and directed *Truth & Beauty Bombs*, an original work based on the Canadian webcomic, "A Softer World." She co-created *Chambers of the Heart* and *MOVE!*, two immersive dance/theatre projects at Word Dance Theatre. She served as Artistic Director of CulturalDC's Source Festival and Mead Theatre Lab Program. In that capacity she oversaw the selection, development and production of more than 200 works for the stage over nearly a decade. Work developed and produced by Jenny at the Source Festival boasts multiple National New Play Network Rolling World Premieres, several American Theatre Critics Association Steinberg Award Nominations, and an Osborn Award Winner. Jenny has directed for Theater J, Capital Fringe Festival, Catholic University and University of Maryland. She's served as a member of Theatre Washington Advisory Board and a mentor director for the Theatre Lab's Honors Acting Conservatory and for the Kennedy Center's American College Theatre Festival and was a featured speaker at the CityWrights Conference in Miami. She graduated cum laude from Virginia Commonwealth University with a BFA in Theatre and briefly joined Mensa for the free pencils. She lives in Takoma, DC with her husband and their long-term collaboration, a son named Thane.

Rorschach Theatre Staff

Founding Artistic Directors: Jenny McConnell Frederick and Randy Baker

General Manager: John Ralls

Production Manager: Germar Townsend

Associate Producer and Press Contact: Jonelle Walker

Season Stage Manager: Caraline Jeffery

Board of Directors: David Ghatan (Chairman), Darian Bedford, Claire Carlin, Sonali Kumar, John Ralls, Jim Rosenberg, J. Toscano, Eileen Vitelli, Randy Baker, Jenny McConnell Frederick



ADDITIONAL SHOW STAFF FOR ANGEL NUMBER NINE

Musical Assistant: Gabe Brown / **Additional Set Construction, Electrics, and Scenic Painting:** Brian Gillick, Reed Simiele, Emma Sloane

ANGEL NUMBER NINE SPECIAL THANKS:

Lerner Enterprises, The Golden Triangle BID, Gordon Nimmo Smith, The Parks at Historic Walter Reed, Pipkin Creative, Walnut Street Creative, Pixelumen Lab, Theatre Lab, Washington Stage Guild, Sydney Moore and American University, Jen Daszczyszak and University of Maryland, Baltimore Unity Hall, Karyn Miller, Anne Corbett, Jon Gann, Bethany Vanderhoff, Dunia Best & Aram Sinnreich, **and the many artists who took part in developmental readings of ANGEL NUMBER NINE both in DC and in LA.**

FILM CREW AND EXTRAS:

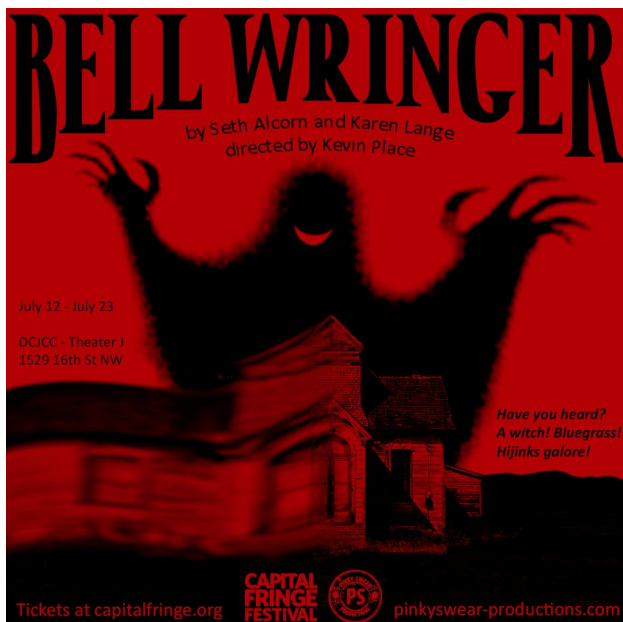
Video Production Assistants: Phillips Boughknight, Sarah Ebsworth, Samantha Noland, Simon Sinnriech / **Extras:** Gina Brillante, Jen Clements, Xitlali Dobbs, Kevin Finkelstein, Matt Frederick, Thane Frederick, Daniella Ignacio, Amanda Johnson, Natasha Sánchez, Stephen Sheridan, Gregory Keng Strasser



[/rorschachtheatre](https://www.facebook.com/rorschachtheatre)



[@rorschachdc](https://twitter.com/rorschachdc)



Rorschach Theatre thanks its contributors:

Season Sponsor (\$5,000+)

DC Commission on the Arts
and Humanities
The Eugene M. Lang Foundation
The Morgan Fund
The Nora Roberts Foundation
The Share Fund
Steve Yockey

Production Sponsor (\$1,000+)

Capitol Hill Community
Foundation
Claire Carlin
Lisa Carr
Anne Corbett
Jeffrey Cunard
Destination DC
David Ghatan
Inter-Lux LLC
Sonali Kumar
Kyle Lehman
Craig Pascal
The Parks at Walter Reed
Owners Association
Julie Rios
Jim Rosenberg
Jean Schepers
Allison Stockman
J Toscano
Catherine Tripp
Eileen Vitelli
Brian Walsh
Gerald Yuille

Opening Night Sponsor (\$500+)

Scott Chew
Franklin Coleman
Sharon Emory
Ben and Leila Fitzpatrick
Jeffrey Gee
Linda Greenan
James & Catherine Jordan
Tim & Diane McConnell
Karl Miller
Rahaleh Nassri
Dita Verheij
Beverly & Christopher With

First Read Club (\$250+)

Eleanor Allen
Rob Colenso
Shirley Couteau
Ben Cross
John Driscoll
Rick & Diane Flaherty
Adam B. Ferguson and
Dr. Yousuf Al-Aboosi
Jeffrey Gee
Elizabeth Goeke
Sandra Hale
Anna Haman
Maggie & John Horn
Stephanie Houseknecht
Brandy Johnson
James Jordan
Ellen Kohn
Karen Lange
Malen Link
Helene Madonick
Sandy Rae McKenzie
Keith Miller
Marc Okrand
Kyoko Pendleton
Stephen Reitz
John Ralls
Rex
Rusty Rowley
Pat Murphy Sheehy
Mark Stalzer
Rose Thun
Alexandra Toma
Gerry Widdicombe

Fan Club (\$100+)

Julianne Brienza
Josh Bryner
Caoilin
Jessica Clark
Christopher Connors
Daniel Corle
KC Constanzo
Edward Cragg
Allyson Currin
Gillian Drake

Fan Club (cont.)

Gerald Epstein
Sean Flaherty
Mary Friedmann
Rachana Gang
Jon Gann
Julia Gothe
Richard Gibson
Chris and Jessi
Burgess Gallu
John Harn
Aaron Heinsman
Thomas Holzman
& Alison Drucker
Patti Horrall
Julie Hill
Daniel Hubbell
Aili Huber
Kimberly Iwansky
Adam Johnston
Michael Kramer
Michael Larkin
Wes MacAdam
Holly Middleton
Carl & Undine Nash
Todd Pfrommer
Michael W. Proffitt
David Reinersmann
Cynthia Rosenberg
Scott Schreiber
Howard Shalwitz
Corrine Smith
Lawrence Smith
Geoff Snowman
Koralleen Stavish
John Stoltenberg
Barbara Strack
Sarah Taurchini
Fern Tavalin
Stephen & Ashley Taylor
Sara Tisdale
Lynne Toskovich
Edith Tuazon
Barbara Vanderhoff
Peter Vitaliano
William Brian Wheeler
Brandy White

Rorschach Theatre Contributors (continued):

Love & Thanks (Up to \$99)

Barton Aronson
Barely Suitable Games
Sara Barker
Monica Batra
Joanna Bellerdine
Sarah Biscardi
Travis Bowerman
Zach Brewster-Geisz
Rachel Buczynski
Deangio Bynum
Jennine Carmichael
Dabney Carver
Cassandra
Michael Chandler
Abigail Colodner
Eric Conrad
Bradley Corallo
Zoe Cowan
Laureen Daly
Colin Davies
Ashi Day
Robert Dickson
Kim Drissel
Joshua Drew
Dylan
Katherine Earle
Will Eastman
Hugh Eckert
Mark Farmer
Cary Filsenger
Jessica Fusillo
Martha C. Galvin
Christine Gerbode
Scott Gilkeson

Ryan Glanzer
Nicholas Goodman
Ed Gramlich
Tim, Becky, & Sawyer Gregory
Andrew Harasty
Marc Haseltine
Nicole Hertvik
Lisa Hodsoll
Jean Louise Holman
Patti Horrall
Joe Householder
Emma Hughes
Fadhma Izri
Elizabeth Jenkins
Jennine
Evan Jensen
Casey Kaleba
Luann Karr
Namdar Kashainian
Jai-Jagdeesh Khalsa
George Koch
Sarah Lessem
Sarah Levine
Nancy Linden
Robert M
Cam Magee
Pamela R Malmgren
Sunil Matte
Gabrielle McCall
Scott McCormick
Patrick McEvoy
Jim McNeill
Amber Meade
Madison Middleton
James Moran
Vince Morris
Adrienne Nelson

Happy O'Brien
Gordon Nimmo-Smith
Ahn-Chi Nguyen
Patricia Petersilia
Sarah Pheasant
Elizabeth Piercy
Ann Pike
Robert Pike
Michael Proffitt
Marianne Reichelt
Mary L Ristau
Linda Russell
William Sandel
Stacia Schwartz
Guy Seaton
Maria Shkaratan
Angela Simmons
Elizabeth Shannon
Tia Shearer
Andrew Shepherd
Lorraine Smith
Kara Sparling
Neysa Spence
Jenny Splitter
Parker Stevens
Marlin Strand
Sylvia
Elizabeth Terry
Damia Torhagen
Jjana Valentiner
Elena Velasco
Jennifer Webb
Ruth Werner
Jordan West
Zachary Wood
Brian Woodburn
Pui-San Yee

KEEP THE MAGIC ALIVE

Disney+ is amazing, you guys. And Netflix. Seriously. It's right there in the tv already. No shoes—or even pants—required.

Rorschach Theatre knows how stiff the competition is when it comes to your entertainment options. But as you know – having spent more than 20 years with our unique brand of theatre – what we do is different. It's our intention to keep engaging you in a way that Hulu never can, bringing you spine-tingling, heartwarming, brain-teasing events that immerse you and engage you.

Please consider making a tax-deductible contribution to Rorschach Theatre today. We can't do it without you.

[CLICK HERE to donate Today](https://rorschachtheatre.com/support)
rorschachtheatre.com/support
[@rorschachdc](https://venmo.com/@rorschachdc)