



HUMAN MUSEUM

A NEW PLAY BY MIYOKO CONLEY

APRIL 12 - MAY 5
RORSCHACHTHEATRE.COM



DIRECTED BY RANDY BAKER

*HUMAN MUSEUM is produced by special arrangement with
BRET ADAMS, LTD., 448 West 44th Street, New York, NY 10036.
www.bretadamsltd.net*

*Human Museum was developed at the Bay Area Playwrights Festival,
a program of the Playwrights Foundation.*

HUMAN MUSEUM

By Miyoko Conley

Directed by Randy Baker

Set Design

Gavin Mosier

Costume Design

Ashlynn Ludvig

Video Design

Kylos Brannon

Sound Design

Ian Vespermann

Lighting Design

Hailey LaRoe

Props Design

Rooster Skylar Sultan

Stage Management

Sophia Menconi (Production Stage Manager)

Natasha Sánchez (Assistant SM)

Cast (in order of appearance):

237: Rebecca Husk

DIRECTOR: Ixchel

65: Aron Spellane

DELIVERY BOT: Ayanna Fowler

SCIENTIST: Jennifer Knight

AVERY: Bri Houtman

UNDERSTUDIES:

Madison Bacino, Terresita Edwards, Sam Fromkin, Lisette Gabrielle

Dramaturg: Divinia Shorter

Associate Video Designer: Benjamin Pallansch

Associate Costume Designer: Tori Niemiec

Assistant Scenic Designer and

Museum Graphic Designer: Sofia Olivar

Assistant Props Designer: Andrew Reilly

House Managers: Michael Kyrioglou, Jill Treby

Bar Manager: Allison Bouley

Production Manager: Germar Townsend

Master Carpenter: Christian Sullivan

Master Electrician: Libby Hinshaw

Second Assistant Stage Manager: Makayla Smith

Production Assistant: Ainsley Priest

Additional Set Construction, Electrics, and

Scenic Painting: Howard Bolden, Muttaqi "Taqi" Daniels, Alexa Diaz, Francisco Fialho, Sean Flaherty, Rose Hull, Daniel InterianoTroy Johnson, Natasha Morales, Kavon Riley

**This project is produced in partnership with
Lerner Enterprises and The Golden Triangle Business Improvement District
and with support by the Share Fund
and the DC Commission for the Arts and Humanities**

Rorschach

THEATRE *we are what you see.™*

Jenny McConnell Frederick and Randy Baker, Artistic Directors

Through uncommon uses of environment and intimate passionate performances, Rorschach Theatre seeks to lure its audiences beyond the limits of ordinary theatrical experience so that they may discover new elements of their own humanity.

Rorschach Theatre tells stories that allow for innovative design and visceral performances. The company treats productions as “installations” that surround the audience with the world of a play. The work centers on the intersection of magic or impossible moments and every day human experiences. Without proselytizing, it provides a complex, intellectual catalyst for self-exploration of challenging subjects.

Rorschach's newest program - “Psychogeographies” – tells season-long immersive narratives that take participants to lesser-known spots around their city as a story unfolds through letters, artifacts, and objects mailed in monthly chapters.

In addition to its regular season, Rorschach produces “Magic in Rough Spaces,” an annual new play development series; “Klecksography,” an annual new artist development event (for actors, local playwrights, and directors); and “Fight Camp,” a stage combat training program held every summer.

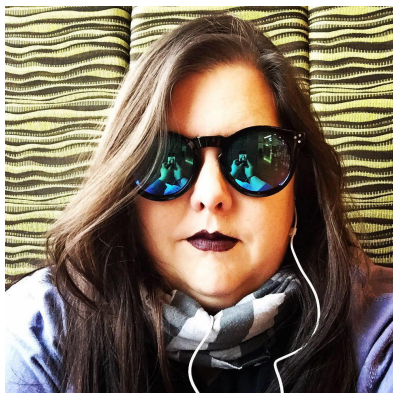


ABOUT THE ARTISTIC DIRECTORS



RANDY BAKER (Artistic Director, Director of *Human Museum*) is a playwright, director and the co-Artistic Director of Rorschach Theatre in Washington DC. Recent shows he has directed with Rorschach include *Very Still and Hard to See* (Five Helen Nominations including Best Director), *Chemical Exile: Synthesis*, *She Kills Monsters*, *The Electric Baby*, *The Minotaur* and *After the Quake*. Some recent shows he has directed outside of Rorschach include the seven-room living installation piece, *Hello, My Name Is...* at The Welders (Three Helen Hayes nominations including Best Director), a shadow puppet gamelan-inspired *A Midsummer Night's Dream* at WSC Avant Bard, *Big Love* at Catholic University, *Anon/ymous* at Georgetown University and his own adaptation of *Rashōmon* at American University. Recent plays he has written include the world premieres of *Forgotten Kingdoms* and *Truth & Beauty Bombs* at Rorschach Theatre and workshops and educational productions of *The Burning Road* (Arena Stage), *Monastery* (Theater J), *Rashōmon* (American University and Spooky Action Theatre), and *Between Days* and *Medea: A Teenage Revenge Tragedy* (Theatre Lab). He is currently developing an adaptation of *The Legend of Hang Tuah* (a retelling of the Malay Legend with shadow puppets and martial arts), collaborating with artists in Singapore and Malaysia.

He has been an adjunct professor at George Washington University and American University and is faculty at The Theatre Lab School of the Dramatic Arts. He has taught and has been a guest artist at numerous other institutions including Georgetown University, Catholic University, The National Conservatory of Dramatic Arts and Imagination Stage. He received his MFA in creative writing from Goddard College.



JENNY MCCONNELL FREDERICK (Artistic Director) is a Director, Producer, and maker of impossible theatre. She's the co-Artistic Director of Rorschach Theatre which she founded in the summer of 1999 with Randy Baker. For Rorschach, she created and developed the company's groundbreaking pandemic pivot *Psychogeographies*. She's currently Helen Hayes Award nominated for her co-adaptation of *Angel Number Nine* and has directed more than a dozen shows including the Helen Hayes Nominated *Voices Underwater* and *God of Vengeance* as well as both of the sold-out runs of Neil Gaiman's *Neverwhere*. She also directed the Helen Hayes Award Nominated *Fantastagirl and the Math Monster* at Adventure Theatre in 2022. In 2015, she conceived and directed *Truth & Beauty Bombs*, an original work based on the Canadian webcomic, "A Softer World." She co-created *Chambers of the Heart* and *MOVE!*, two immersive dance/theatre projects at Word Dance Theatre. She served as Artistic Director of CulturalDC's Source Festival and Mead Theatre Lab Program. In that capacity she oversaw the selection, development and production of more than 200 works for the stage over nearly a decade. Work developed and produced by Jenny at the Source Festival boasts multiple National New Play Network Rolling World Premieres, several American Theatre Critics Association Steinberg Award Nominations, and an Osborn Award Winner. Jenny has directed for Theater J, Capital Fringe Festival, Catholic University and University of Maryland. She's served as a member of Theatre Washington Advisory Board and a mentor director for the Theatre Lab's Honors Acting Conservatory and for the Kennedy Center's American College Theatre Festival and was a featured speaker at the CityWrights Conference in Miami. She graduated cum laude from Virginia Commonwealth University with a BFA in Theatre and briefly joined Mensa for the free pencils. She lives in Takoma, DC with her husband and their long-term collaboration, a son named Thane.

ABOUT THE CAST



Ayanna Fowler (she/her) (Delivery Bot) Originally from Chicago, IL, Ayanna is a Howard University alumna. She has played Beneatha Younger in *A Raisin in the Sun*, Deisha Drummond in *Life Isn't Fair*, and Juror #4 in *Twelve Angry Women*. She's had the privilege of being a writer and actor in Young Playwrights' Theatre's *Silence is Violence: New Normal*. This is her first time working with Rorschach Theatre and she is very excited about this opportunity. She wants to thank her family and friends for their continuous love and support.



Bri Houtman (they/she) (Avery) is a DC based actor who is psyched for their third show with Rorschach! Local credits include *Dracula A Feminist Revenge Fantasy*, *Really* and *Angel Number Nine* (Rorschach Theatre), *A Commedia Romeo and Juliet* and *Love Like Tuesday* (Faction of Fools), *The Very Hungry Caterpillar* and *Mouse on the Move* (Imagination Stage) *Kill the Ripper* and *Iphigenia* (We Happy Few), and *Arco Iris* (Arts on the Horizon). They hold a B.A. in theater and criminal justice from George Washington University.



Rebecca Husk (she/her) (237) is a performer and real-life museum exhibit designer making her DC debut after several years treading the boards in Chicago. Regional: *Ride the Cyclone* (4 Chairs Theatre); *I Promised Myself to Live Faster* (u/s) (Hell in a Handbag Productions); *The Creators* (u/s) (Three Brothers Theatre); *Titus Andronikids*, *Drink! Pride Edition* (Corn Productions); *Reflections on Fire*, *Illumination* (Cabinet of Curiosity). Rebecca holds a Master's and Bachelor's from The University of Chicago, and when not onstage or in a museum can likely be found ranting about theme park queues. www.rebeccahusk.com



Ixchel (she/they) (Director) is a local actor, singer-songwriter, stand-up comic, and storyteller born and raised in the DC area. Acting credits include: GALA Hispanic Theatre: *Don Quijote y Sancho Panza iNuevas Adanzas!*; Theater Alliance/The Kennedy Center: *Look Both Ways*; Angel Rose Artist Collective: *Isiwapilzin Tućinamit*; NextStop Theatre Company: *In the Heights* (Nina Rosario); Constellation Theatre Company: *Incognito*; We Happy Few: *La Llorona*; Imagination Stage: *Linda y Libre*; Restoration Stage: *The Very Last Days of the First Colored Circus*; The Bushwick Starr: *Big Green Theater*. She has been featured for her comedy, music, and storytelling for Grassroots Comedy, Improbable Comedy, Comedy Loft, Callback Comedy, Improbable Comedy, Busboys and Poets, Washington Roast, Spit Dat in Residence at Woolly Mammoth, The Smithsonian Anacostia Community Museum, Rhizome DC and 7DrumCity.

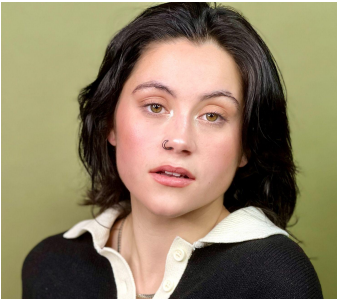


Jennifer Knight (she/her) (Scientist) is a multi-disciplinary artist with a passion for storytelling and New Work. She has had the fortune to work with Folger Theater, Arena Stage, Mosaic Theater, Constellation Theater, Spooky Action Theater, The Welders, and Adventure Theater. She is a proud graduate of the National Conservatory of Dramatic Arts and an emeritus company member of her favorite ~ Rorschach Theatre.



Aron Spellane (He/Him)(65) is an actor and dancer in the DC area. Recent credits include Actor 3 in *Not My Monkey* (InterAct Story Theatre); Michael in *God of Carnage* (Breakout Theatre), Bobby in *Fishtown* (Theatre Lab); Edmund in *King Lear* (Theatre Lab); Antigonus/Clown in *The Winter's Tale* (The Wheel); and KJ in *Annie Jump and the Library of Heaven* (Rorschach Theatre). He would like to thank Chris, his family, and Claddagh the cat. Training: Honors Acting Conservatory at Theatre Lab, BA from Macalester College.

UNDERSTUDIES



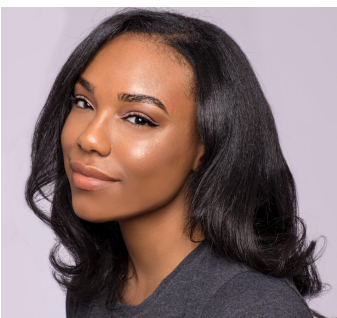
Madison Bacino (she/her) (Understudy: DIRECTOR) is an actor and artist who was born, raised, and is based in the DMV area. You may have seen her recently in Strand Theatre's *The Lady was a Gentleman* or Rorschach Theatre's "Klecksography." She received a BFA in performance from George Mason University as well as a Certificate in Performance from the Stella Adler Studio of Acting. She would like to thank her parents for all their support. See more at madisonbacino.com



Terresita Edwards (she/her) (Understudy: SCIENTIST) is excited for her debut at Rorschach Theatre. Washington Stage Guild/The Theatre Lab Staged Readings: *Pride and Prejudice* (Mrs. Bennet); *To Kill a Mockingbird* (Reverend Sykes); *Midnight's Children* (Mary Pereira/Rani); *The Prime of Miss Jane Brodie* (Miss Mackay); Artfactory/Rooftop Productions: *By the Way Meet Vera Stark* (Lottie /Carmen); Hylton Performing Arts Center/ Prince William Little Theatre: *Blithe Spirit* (Madam Arcati) [WATCH nomination for Best Featured Actress]; Workhouse Art Center: Staged Readings: *Flyin' West* (Sophie); Crumbs From the Table of Joy (Aunt Lily). FILM: *This Is the Last Time* (Chelsea Terry). TV: *The Lovey's* (Cohost). EDUCATION: Honor's Acting Conservatory at the Theatre Lab School of the Dramatic Arts.



Sam Fromkin (he/him) (Understudy: 65/DELIVERY BOT) is excited to be working with Rorschach on Human Museum after recently participating in their Klecksography workshop. He's thrilled to support the main cast in this creative new work! DC credits: One Mo' Time (Anacostia Playhouse), Exclusion (Arena Stage), Príncipe y Príncipe (GALA Hispanic Theatre), Mr. Popper's Penguins (Imagination Stage), Squeakers & Mr. Gumdrop (Arts on the Horizon), Antigone (The Kennedy Center). Find Sam at samfromkin.com.



Lisette Gabrielle (she/her) (UNDERSTUDY: 237/AVERY), a Theatre & Performance Studies graduate from Georgetown University, honed her acting skills at NYC's Upright Citizens Brigade, DC's Shakespeare Theatre Company and London Academy of Music & Dramatic Art. She has graced the stage as Judith B. Kaufman in *An American Daughter*, Vera Stark in *By the Way Meet Vera Stark*, Mrs. Martin in *The Bald Soprano*, among others. Lisette has appeared in short and feature length independent films including her co-directing debut in *The Golden Age of Content* selected by Chelsea Film Festival in 2022. Lisette, now a certified yoga teacher, emphasizes mind-body connection in her craft. She is grateful to work with Rorschach on telling such a thrilling and poignant story on the journey of human beings that could only be written by a human being (not AI).

ABOUT THE CREATIVE TEAM



Kyle Brannon (He/Him) (Video Designer) is a company member with Rorschach Theatre and this marks his 9th show designing video for Rorschach, past shows include *410[Gone}*, *Reykjavik*, *Toxic Avenger Musical*, and *Night of the Living Dead* (nominated for a 2023 Helen Hayes Award). He is part of creative team for the Psychogeographies Projects. When not making media for Rorschach, Kyle is an Assistant Professor at American University where he acts as Associate Director for the Film and Media Arts Program. You may also find him occasionally on stage at 930 Club mixing live video projection for various DJ nights.



Hailey LaRoe (she/her) (Lighting Designer) is excited to be back with Rorschach Theatre for this fabulous show! Hailey is a Lighting and Projection designer, based in the DC area. Recent Lighting designs; *Henri IV* (American University), *Las Hermanas Palacios* (Gala Theatre), *School girls; or the African Mean Girls Play* and *Ride the Cyclone* (Next Stop Theatre), *Golden Fish* and *Cyrano de Bergerac* (Synetic theatre), *Hazardous Materials* (Perisphere theatre), and *Monstress* (Flying V). Recent Projection designs; *Nancy* (Mosaic Theatre), *Bathing in Moonlight* (Gala Theatre), *Monsters of the American Cinema* (Prologue Theatre), and *Sometimes the Rain Sometimes the Sea* (Rorschach Theatre). Enjoy! haileylarosedesigns.com.



Sophia Menconi (she/her) (Production Stage Manager) is thrilled to be making her Rorschach debut! Pipeline Playwrights (*Wednesdays in Mississippi*), Nu Sass Productions (*Finding Neil Patrick Harris*, *The Oreo Complex*), and Flying V (*Monstress - ASM*). Other recent collaborators include: Folger Theatre, NextStop Theatre Company, and Spooky Action Theater. Sophia is a freelance stage manager, director, and theatre scholar based in Washington, DC. She is a member of the inaugural cohort of the MA in Theatre and New Play Development degree at Hollins University, where her research examines post-feminist girlhood in contemporary theatre. You can find her on Instagram @aka_sophia.



Gavin Mosier (he/him) (Scenic Designer) is a DC area scenic designer and art director working in theatre, film, and immersive design. Current design credits include *Men on Boats* (Scenic Designer), *As You Like It* (Scenic Designer), *Later the Same Evening* (Scenic Designer), and *Popular Theory* (Art Director). When not designing, Gavin enjoys traveling with his wife Kaitlyn (and their cats Bing & Frankie), flipping the vinyl over on the turntable, rummaging through antique shops, attending any and every museum, and sipping a cup of coffee (or whiskey).



Tori Niemiec (Associate Costume Designer) Originally from Arizona, Tori has been working on the east coast for two years now. Their works include *The Waffle House Musical*, *The Meeting House Tragedy* and *Giant Slalom* at Andy's Summer Playhouse. *Dance X* at the University of Maryland. Recently they assisted at Olney Theatre for *Lend Me A Soprano* and Folgers Theatre for *A Winter's Tale*.



Ashlyne (Ash) Ludwig (She/Her) (Costume Designer) is excited to team up with Rorschach once again! Local credits include *Angel Number Nine* at Rorschach Theatre, *P.Nokio* at Imagination Stage, *Urinetown* at American University, *Bell Wringer* with Pinky Swear Productions, and more. Associate design credits include *Pacific Overtures* at Signature Theatre, *People, Places, and Things* at Studio Theatre, and *Quixote Nuevo* at Roundhouse Theatre. Other credits include *Little Shop of Horrors* and *Hunchback of Notre Dame* (Cumberland County Playhouse) and *Elvis: A Musical Revolution* (Legacy Theatre). @ashludwigcostumes



Benjamin Pallansch (He/Him) (Associate Video Designer) is a motion graphics designer/projections designer in the DMV who has made projections for shows such as *Girlhood* at Round House Theatre. Benjamin is a very quick learner and is constantly improving his craft. Through his work - Ben wants to inspire and help people think critically. Benkp.com



Natasha Sánchez (She/Her) (Assistant Stage Manager) is excited to embark on a new adventure with Rorschach Theatre for *Human Museum!* Originally from Southern California, she has enjoyed a vibrantly multifaceted artistic lifestyle as an operatic performer and advocate for musical outreach, in addition to her current parallel passion for Stage Management. Her most recent favorite collaborations include: Rorschach Theatre: *Night of the Living Dead*, *Angel Number Nine*, *Sometimes the Rain Sometimes the Sea*; Constellation Theatre Company: *Desperate Measures*, *The School for Lies*; Ford's Theatre: *A Christmas Carol*; Theatre Washington: Theatre Week Kickoff 2023!



Divinia Shorter (She/Her) (Dramaturg) is a queer, Black Latina writer, dramaturg, and director freelancing in the DMV and beyond. She is a senior associate with LINK Strategic Partners and the co-founder of Greatest City Collective, a non-profit focused on uplifting artists and the social causes they care about. She is host to the Collective's podcast *Bus Ride Talks*. A writer of many forms, her current focus is a YA novel and her full length play *Queens*. Dramaturgy credits include: La Jolla Playhouse, Studio Theatre, TheatreSquared, Rorschach Theatre Company, Adventure Theatre, Nashville Repertory Theatre, Roundabout Theatre Company, and Towson University.



Makayla Smith (She/Her) (Second Assistant Stage Manager) is an apprentice in the Arts Institute for Creative Advancement (AICA) at The Theatre Lab. After doing theatre for seven years in Mississippi, she recently moved to the DC area for the AICA program in order to accelerate her career in professional theatre emphasizing stage management and costuming. In addition to *Human Museum*, Makayla was the Assistant Stage Manager for Breakout Theater's production of *Proof*, also directed by Randy Baker. She is also set to call her first show as the stage manager in May.



Christian Sullivan (He/Him) (Technical Director) has done at least something for most every theatre in the area. A Technical Director, carpenter, actor, fight choreographer... he's done a lot. Currently, he's looking for a full time job and a girlfriend. So, if you have any leads on other, feel free to reach out.



Rooster Sultan (She/Her) is excited to be returning to Rorschach for a 3rd production. Some of her recent prop design credits include: *Sometimes the Rain, Sometimes the Sea; Chemical Exile: Synthesis* (Rorschach Theatre); *Blackwell Island; The Pursued, The Pursuing, The Busy and The Tired* (Signature in the Schools) *Quilters; The Rainmaker* (1st Stage) *The Visit; A New Brain; The Amateurs; Dontrell Who Kissed the Sea; The Nether* (Montgomery College). Rooster is a graduate of The University of North Georgia and a member of USITT – Chesapeake Region.



Germar Townsend (He/Him) (Production Manager) is Southern by birth, and bi-coastal by choice. His interdisciplinary education includes three degrees that focused on music, film, production, media, and law (#FangsUp, #STATenotSouthern, #CUintheCity, #Beardown). After over 20 years in audio, video production, and non-profit work, he returned to his first love--theatre. For the past six years, he's worked in theaters as a technical director, production manager, and production director, proving that you can indeed go home again.



Ian Vespermann (He/Him) (Sound Designer) is a DC based Sound Designer, Composer, and Audio Engineer from New Hampshire. His recent works include *The Dragon King's Daughter* at The Kennedy Center TYA (sound designer), *Confederates* at Mosaic Theater (co-sound designer), *Angel Number Nine* at Rorschach Theater (designer & engineer), and *17 Border Crossings* with Thaddeus Phillips at The Great Theater Of China (engineer). Ian has a BFA in Sound Design from The University of North Carolina School of The Arts, and a former Kenan Fellow at the Kennedy Center.

Rorschach Theatre Staff

Founding Artistic Directors: Jenny McConnell Frederick and Randy Baker

General Manager: John Ralls

Production Manager: Germar Townsend

Board of Directors: David Ghatan (Chair), Randy Baker, Darian Bedford, Kathleen Borschow, Claire Carlin, Sonali Kumar, Jenny McConnell Frederick, John Ralls, J. Toscano, Heather Whitpan



HUMAN MUSEUM SPECIAL THANKS:

Lerner Enterprises, The Golden Triangle BID, The Parks at Historic Walter Reed, Pipkin Creative, Walnut Street Creative, Pixelumen Lab, CM Kling, Theatre Lab, Mosaic Theatre, University of Maryland, American University, Jericho Stage, Kevin Sockwell, Adeline Katherine, Tom Sherwood, and Kojo Nnamdi

Rorschach Theatre thanks its contributors

**HUMAN MUSEUM is produced in partnership with
Lerner Enterprises and The Golden Triangle BID
and with support provided by
the DC Commission for the Arts and Humanities.**

**Rorschach's Season is also sponsored in part by generous contributions from:
The Eugene M. Lang Foundation, The Morgan Fund, The Nora Roberts Foundation,
and The Share Fund**

Season Sponsor (\$5,000+)

DC Commission on the Arts
and Humanities
The Eugene M. Lang Foundation
The Morgan Fund
The Nora Roberts Foundation
The Share Fund
Steve Yockey

Production Sponsor (\$1,000+)

Susan and Dixon Butler
Bonnie and Lou Cohen
Capitol Hill Community
Foundation
Destination DC
Inter-lux LLC
Claire Carlin
Lisa Carr
Compass Consulting
Alex Gallimore
David Ghatan
Golden Triangle BID
Sonali Kumar
Lynne Martin
Craig Pascal
The Parks at Walter Reed
Owners Association
Julie Rios
James rosenberg
Allison Stockman
J. Toscano
Catherine Tripp
Dita Verheij
Eileen Vitelli
Brian Walsh
Westin Washington DC City Center
Heather Whitpan
Jerry Yuille

Opening Night Sponsor (\$500+)

Chris Babb
John Driscoll

Alison Drucker & Tom Holzman
Anne Corbett
Sara Cormeny
Jeff Gee
Karen Lange
Karl Miller
Rahaleh Nassri
Chuck O'Toole
David Sharman
Jean Schepers
Mark Stalzer

First Read Club (\$250+)

Eleanor Allen
Elizabeth Blakeslee
Robert & Joy Brillante
Allison Bouley & David
Reinersmann
Scott Chew
Sarah Cochran
Rob Colenso & Kaiti Saunders
Daniel Corle
Congressional Cemetery
Edward Cragg
Bennett Cross
Gace Denman
Matt Dunphy
Sharon Emory
Joan Fabry and Michael Klein
Adam Ferguson
Jeffrey Gee
Baxter Goodly
Ellie Goeke
Julia Gothe
Erik Harrison
Nannette Henderson
Julie Hill
John Horn
Stephanie & David Houseknecht
Amy Hubbard
Melanie Hudson

Tatiana Karpova
Jewish Communal Fund /
Brown Penny Fund
Joanne Kelly
Kyle Lehman
Malen Link
Charlotte Magee
Tim & Diane McConnell
Keith J Miller
Kyoko Pendleton
Pat Murphy Sheehy
Marc Okrand
Carmen C. Ramirez
Steve Reitz
Rex Robison
Rusty Rowley
Mike Rucki
Scott & Evelyn Schreiber
Mark Stalzer
Barbara Strack
Rosemarie Thun
Kelley Wells
Ruth Werner
William Brian Wheeler
Charles Wilkes
Eva Wingren

Fan Club (\$100+)

Donna Ari
Dennis Bass
Julianne Brienza
Michael Burke
Jennine Carmichael
Sarah Cochran
Franklin Coleman
KC Costanzo
Frankie DiVita
John Driscoll
Rachel Feola
Fitzpatrick Charitable
Foundation

Rorschach Theatre Contributors (continued):

Fan Club (cont.)

Richard Fiske
Katie Golden
Chris and Jessi Gallu
Jon Gann
Rachana Garg
Richard Gibson
Nancy Hartsock
Aaron Heinsman
Julie Hill
Michelle Carter Hilton
Aili Huber
Kimberly Iwansky
Monica Jilling
Brandy Johnson
Adam Johnston
Catherine Jordan
James Jordan
Michael Lastort
Michael Kramer & Jennifer
Mendenhall
Alesia Lucas
Stacie Mruk
Michael Larkin
Wes MacAdam
Madison Productions
Letty Medrano
Keith J Miller
Karyn Miller
Carl & Undine Nash
Caoilin O'Connor
Kyoko Pendleton
Michael Proffitt
David Reznik
Mary Ristau
Linda Russell
Scott Schreiber
Howard Shalwitz
Michael Skinner
Corinne Smith
Geoff Snowman
Carmine Spellan
Koralleen Stavish
Barbara Strack
Sarah Turchini
Ashley Taylor
Sara Tisdale
Peter Vitaliano
Gerard Widdicombe
Cattleya Wongkongkathep

Love & Thanks (Up to \$99)

Amira Abadir
Chrystal Adaway
Barton Aronson
Sara Barker
Laura Barriere
Monica Batra
John Bavaso
Gail Beach
Nazhin Beiramee
Joanna Bellerdine
Sarah Biscardi
Paul & Sharon Bouley
Robert Bown Smith
Travis Bowerman
Margaret Brown
Zach Brewster-Geisz
Gina Brillante
Rachel Buczynski
Eugene Buot
Deangio Bynum
Jennine Carmichael
Dabney Carver
Michael Chandler
Diana Cherkas
Abigail Colodner
Eric Conrad
Maryanne Costa
Zoe Cowan
Lee Cromwell
Allyson Currin
Ciara Curtin
Ashi Day
Paul Davidson
Robert Dickson
John Dow
Gillian Drake
Joshua Drew
Dabra Duffin
Will Eastman
Hugh Eckert
Samuel Espinosa
Mark Farmer
Cary Filsinger
Jessica Fusillo
Martha Galvin
Valerie Sosa Garnica
Esther Geiger
Ryan Glanzer
Karen Golden
Santiago Gonzalez
Nicholas Goodman

Ed Gramlich
Tim, Becky, and Sawyer
Gregory
David Hand
Andrew Harasty
Marc Haseltine
Christina Heid
Alan Hengst
Nicole Hertvik
Michelle Hilton
Lisa Hodsoll
Jean Holman
Chris Hourcle
Patti Horrall
Joe Householder
Dave Houston
Fadhma Izri
Christopher James
Evan Jensen
Rachel Johns
Amanda Johnson
Casey Kaleba
John Kerl
Brianna Knoppow
George Koch
Peggy Kong
Sarah Lessem
Sarah Levine
Nancy Linden
Denise Liberton
Amber Logsdon
Lynn Luthey
Michelle Lynch
Dylan Mahoney
Dana Maier
Juli Majernik
Pamela R Malmgren
Laura Marks
Lindsay Marks
James Marmolejo Mendez
Sunil Matte
Gabrielle McCall
Connor Patrick McCreesh
Scott McCormick
Patrick McEvoy
Jim McNeill
Marla and Tim McQuiston
Amber Meade
Holly Middleton
Madison Middleton
Catherine Minkler
Robert Montenegro
Vincent Morris
Paige Muller

Rorschach Theatre Contributors (continued):

Love & Thanks (Up to \$99) Continued

Dustin Murray
Claire Myles
Adrienne Nelson
Tyler Nelson
Gordon Nimmo-Smith
Happy O'Brien
Jennifer Osborn
Patricia Petersilia
Ann Pike
Robert Pike
Erin Radford
Marianne Reichelt
Linda Reinisch
Ginger Robinson
Heather Roemer
J
Stacia Schwartz

Guy Seaton
Catherine Sexton
Elizabeth Shannon
Andrew Shepherd
Andrew L Shepherd
Maria Shkaratan
Jogen Shukla
Emma Sloane
Angela Simmons
Neysa Spence
Jenny Splitter
Anne St. John
Stephen Stahr
Cristen Stephanskyu
Parker Stevens
John Stoltenberg
Ashley Taylor
Elizabeth Terry
Damia Torhagen
Lynne Toskovich

Matt Trainum
Rachel Tuckerman
Elena Velasco
Ben Verschoor
Dan Via
Samuel Waite
Michelle Walters
Jennifer Webb
Jonathan Werner
Jordan West
Brandy White
Mila Whiteley
E Woo
Zachary Wood
Brian Woodburn
Pui-San Yee
Patricia Zweibel

KEEP THE MAGIC ALIVE

Disney+ is amazing, you guys. And Netflix. Seriously. It's right there in the tv already. No shoes—or even pants—required.

Rorschach Theatre knows how stiff the competition is when it comes to your entertainment options. But as you know – having spent more than 20 years with our unique brand of theatre – what we do is different. It's our intention to keep engaging you in a way that Hulu never can, bringing you spine-tingling, heartwarming, brain-teasing events that immerse you and engage you.

Please consider making a tax-deductible contribution to Rorschach Theatre today.

We can't do it without you.

[CLICK HERE to donate Today](#)

rorschachtheatre.com/support

OR

venmo @rorschachdc



RORSCHACH THEATRE'S 25th Anniversary Party

SAVE-THE-DATE: June 1, 2024

**Get ready to party like it's 1999!
Rorschach's 25th Anniversary Bash is
on the way. Details to come... mark your
calendars now!**



When a firework-filled marriage proposal goes very wrong, the accompanying explosions wake up something very old that has been sleeping in the nearby lake for thousands of years. What follows are intimate, darkly comic, and sometimes startling vignettes about the lengths people go to when they desperately want to believe in something.

Written by the playwright of previous Rorschach shows **VERY STILL AND HARD TO SEE** and **REYKJAVIK**, and the creator of the HBO series **THE FLIGHT ATTENDANT** and the upcoming Netflix series **DEAD BOY DETECTIVES**.

October 4 - November 3
TICKETS ON SALE NOW
[at rorschachtheatre.com](http://rorschachtheatre.com)

ELDRITCH INVESTIGATIONS: A PSYCHOGEOGRAPHIES PROJECT

Created by Steve Yockey, Kylos Brannon, Jenny McConnell
Frederick, Luke Hartwood, and Jonelle Walker



[ELDRITCH INVESTIGATIONS](#) is a seven-chapter, season-long experience across multiple locations in Washington DC.

"With Psychogeographies, Rorschach Theatre excites the mind and ignites curiosity with unique storylines incorporating the fascinatingly rich history of DC."
— DC Theater Arts

Cults and cryptids collide when a curious Washingtonian investigates local unexplained phenomena. Explore the lure of the unknown and its entanglement with DC history in this multi-chapter adventure across the city.

A Psychogeographies project, ELDRITCH INVESTIGATIONS harnesses the power of both the built and natural world to create a visceral piece of immersive storytelling. Each chapter provides instructions to travel to a new curated location in the DC area and a box of artifacts to engage all five senses while exploring each site with story elements such as letters, music, souvenirs, or photos.

This season, Steve Yockey, Emmy-nominated screenwriter (HBO Max's *The Flight Attendant*) and playwright (*Reykjavik*, *Very Still* and *Hard To See*) joins the creative team behind Rorschach's Psychogeographies Projects. In addition, Yockey's dark comedy *Sleeping Giant* (opening in October) is included in the subscription, and the script's themes of passionate devotion to questionable idols will resonate throughout *Eldritch Investigations*.

Subscriptions to *Eldritch Investigations* include the multi chapter experience as well as a ticket to *Sleeping Giant* in October 2024. **Subscriptions to the project can be purchased at rorschachtheatre.com/eldritch**

WHAT IS PSYCHOGEOGRAPHIES?

Hundreds of DC-Area audiences joined us for Rorschach's first two Psychogeographies projects, described by the *The Washington Post* as "[a] season-long immersive experience, that sends audiences on monthly excursions to lesser-traveled Washington-area sites, where landscapes — together with the contents of curated mailed packages — help conjure a mysterious overarching story that is partly set in those locations."

DC Theater Arts said about the project, "Rorschach Theatre's current production is...an adventure of the mind and, if you wish, the body... The innovative form of art incorporates literature, music, mystery, romance, and DC's highlights and history, all steeped in a hope for a better world... Rorschach Theatre has hit the jackpot with this innovative form of art, incorporating literature, music, mystery, romance, and DC's highlights and history, all steeped in a hope for a better world."

rorschachtheatre.com/eldritch

