

# SLEEPING GIANT

By Steve Yockey

Directed by Jenny McConnell Frederick

**OCT 4 - NOV 3, 2025**

*An ancient evil awakens deep within a lake...*

A new play by the creator of HBO's THE FLIGHT ATTENDANT  
and Netflix's DEAD BOY DETECTIVES

*Rorschach*  
THEATRE *we are what you see."*

# SLEEPING GIANT

**By Steve Yockey**

**Directed by Jenny McConnell Frederick**

**Set Design**

Sarah Beth Hall

**Costume Design**

Ashlynnne Ludwig

**Video Design**

Kylos Brannon

**Sound Design**

Thom J. Woodward

**Lighting Design**

Dean Leong

**Props Design**

Aoife Creighton

**Stage Management**

Leica Long (Production Stage Manager)

Natasha Sánchez (Assistant SM)

**Cast:**

**Robert Bowen Smith:** The Messenger

**Erin Denman:** The Convert

**Sydney Dionne:** The Naïf

**Jacob Yeh:** The Raconteur

**UNDERSTUDIES:**

Semaj Kelly, Tiana Lockhart, Sarah Millard, Taylor Stevens

**Technical Director:** Madelyn Southard

**Assistant Lighting Designer and**

**Master Electrician:** Daelyn Funk

**Production Manager:** Germar Townsend

**Production Associate:** Sean Flaherty

**House Managers:** Michael Kyrioglou,  
Jordana Adelman

**Assistant Costume Designer:** Jillian Skara

**Second Assistant Stage Managers:** Jillian Skara,  
Mardelle Singleton

**Additional Set Construction, Electrics, and**

**Scenic Painting:** Eli Bendel-Simso, Andrew Brown,  
Sean Flaherty, Troy Johnson, Caleb McMurtry,  
Joseph Normandy

**This project is produced in partnership with  
Lerner Enterprises and The Golden Triangle Business Improvement District  
and with support by the Share Fund  
and the DC Commission for the Arts and Humanities**

# Rorschach

## THEATRE *we are what you see.™*

**Jenny McConnell Frederick and Randy Baker, Artistic Directors**

Through uncommon uses of environment and intimate passionate performances, Rorschach Theatre seeks to lure its audiences beyond the limits of ordinary theatrical experience so that they may discover new elements of their own humanity.

Rorschach Theatre tells stories that allow for innovative design and visceral performances. The company treats productions as “installations” that surround the audience with the world of a play. The work centers on the intersection of magic or impossible moments and every day human experiences. Without proselytizing, it provides a complex, intellectual catalyst for self-exploration of challenging subjects.

Rorschach's newest program - “Psychogeographies” – tells season-long immersive narratives that take participants to lesser-known spots around their city as a story unfolds through letters, artifacts, and objects mailed in monthly chapters.

In addition to its regular season, Rorschach produces “Magic in Rough Spaces,” an annual new play development series; “Klecksography,” an annual new artist development event (for actors, local playwrights, and directors); and “Fight Camp,” a stage combat training program held every summer.



[/rorschachtheatre](https://www.facebook.com/rorschachtheatre)



[@rorschachdc](https://www.instagram.com/rorschachdc)





## ABOUT THE ARTISTIC DIRECTORS



**JENNY MCCONNELL FREDERICK (Artistic Director, , Director of *Sleeping Giant*)** is a Director, Producer, and maker of impossible theatre. She's the co-Artistic Director of Rorschach Theatre which she founded in the summer of 1999 with Randy Baker. For Rorschach, she created and developed the company's groundbreaking pandemic pivot *Psychogeographies*. She's currently Helen Hayes Award nominated for her co-adaptation of *Angel Number Nine* and has directed more than a dozen shows including the Helen Hayes Nominated *Voices Underwater* and *God of Vengeance* as well as both of the sold-out runs of Neil Gaiman's *Neverwhere*. She also directed the Helen Hayes Award Nominated *Fantastagirl and the Math Monster* at Adventure Theatre in 2022. In 2015, she conceived and directed *Truth & Beauty Bombs*, an original work based on the Canadian webcomic, "A Softer World." She co-created *Chambers of the Heart* and *MOVE!*, two immersive dance/theatre projects at Word Dance Theatre. She served as Artistic Director of CulturalDC's Source Festival and Mead Theatre Lab Program. In that capacity she oversaw the selection, development and production of more than 200 works for the stage over nearly a decade. Work developed and produced by Jenny at the Source Festival boasts multiple National New Play Network Rolling World Premieres, several American Theatre Critics Association Steinberg Award Nominations, and an Osborn Award Winner. Jenny has directed for Theater J, Capital Fringe Festival, Catholic University and University of Maryland. She's served as a member of Theatre Washington Advisory Board and a mentor director for the Theatre Lab's Honors Acting Conservatory and for the Kennedy Center's American College Theatre Festival and was a featured speaker at the CityWrights Conference in Miami. She graduated cum laude from Virginia Commonwealth University with a BFA in Theatre and briefly joined Mensa for the free pencils. She lives in Takoma, DC with her husband and their long-term collaboration, a son named Thane.



**RANDY BAKER (Artistic Director)** is a playwright, director and the co-Artistic Director of Rorschach Theatre in Washington DC. Recent shows he has directed with Rorschach include *Very Still and Hard to See* (Five Helen Nominations including Best Director), *Chemical Exile: Synthesis*, *She Kills Monsters*, *The Electric Baby*, *The Minotaur* and *After the Quake*. Some recent shows he has directed outside of Rorschach include the seven-room living installation piece, *Hello, My Name Is...* at The Welders (Three Helen Hayes nominations including Best Director), a shadow puppet gamelan-inspired *A Midsummer Night's Dream* at WSC Avant Bard, *Big Love* at Catholic University, *Anon/ymous* at Georgetown University and his own adaptation of *Rashōmon* at American University. Recent plays he has written include the world premieres of *Forgotten Kingdoms* and *Truth & Beauty Bombs* at Rorschach Theatre and workshops and educational productions of *The Burning Road* (Arena Stage), *Monastery* (Theater J), *Rashōmon* (American University and Spooky Action Theatre), and *Between Days* and *Medea: A Teenage Revenge Tragedy* (Theatre Lab). He is currently developing an adaptation of *The Legend of Hang Tuah* (a retelling of the Malay Legend with shadow puppets and martial arts), collaborating with artists in Singapore and Malaysia.

He has been an adjunct professor at George Washington University and American University and is faculty at The Theatre Lab School of the Dramatic Arts. He has taught and has been a guest artist at numerous other institutions including Georgetown University, Catholic University, The National Conservatory of Dramatic Arts and Imagination Stage. He received his MFA in creative writing from Goddard College.

## ABOUT THE CAST



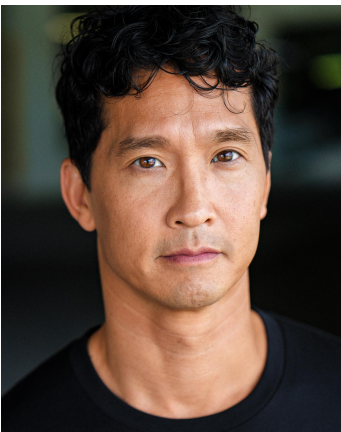
**Robert Bowen Smith** (he/him) (The Messenger: Billy, The Hidden Man, Gus, Charlie, The Butterfly King) Previous Rorschach credits: *Angel No.9* (Cupid), *Reykjavik* (Peter/Mike/Davey), *Nowhere* (Mr. Croup). Other theater credits include: Folger Theater (Sampson); Keegan Theatre: *Shakespeare in Love* (Burbage), *Ripcord* (Benjamin/Lewis/Clown); American Shakespeare Center: *Love's Labour's Lost* (Mote); Theater Alliance: *The Raid* (John Brown Jr.); Imagination Stage: *Escape from Peligro Island* (Camera Man); Hub Theatre: *in a word* (Man), *Peekaboo!* (Joseph); Synetic Theater: *The Three Musketeers* (King Louis), *Picture of Dorian Gray* (Basil), *The Wizard of Oz* (The Wizard), *Hunchback of Notre Dame* (Gringoire). [www.robertbowensmith.com](http://www.robertbowensmith.com) @mottopuck



**Erin Denman** (she/her) (The Convert: Barbara, Jill, Mable, Multitudes) is excited to be on stage with Rorschach. Originally from Minneapolis, Minnesota, Erin moved to DC to get her MFA from the STC Academy in 2018. Locally, you may have seen her with Solas Nua, Pipeline Playwrights, Flying V, and in Rorschach Theatre's Klecksography.

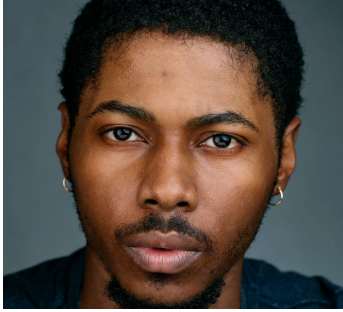


**Sydney Dionne** (she/her) (The Naïf: Alex, Maggie, Jessie, Multitudes, Zealot) is elated to be returning to the Rorschach stage in this wonderful production! Most recently, she has performed with: Rorschach Theatre: *Sometimes the Rain, Sometimes the Sea* (Raincloud); *Night of the Living Dead* (Judy); Theatre Alliance: *TransAtlantic Time Traveling Company* (Swing, u/s Ruth); Imagination Stage: *A Year With Frog and Toad* (Lady Bird, Young Frog); Constellation Theatre: *Once On This Island* (Erzulie); Next Stop Theatre Company: *46 Plays for First Ladies*; *Lucky Stiff* (Dominique du Monaco); She is extremely grateful to her family and friends who provide her with endless support! Tiktok/IG: @thesydneydionne



**Jacob Yeh** (he/him) (The Raconteur: Ryan, Patrick, Nathan, Dan) (The Raconteur: Ryan, Patrick, Nathan, Dan) is thrilled to be returning to Rorschach (*410 Gone*). He was recently seen in *The King of the Yees* (HH Nom – Supporting Actor) at Signature Theatre and *How the Light Gets In* (HH Nom – Supporting Actor) at 1st Stage (where he is an Artistic Associate) and will be in *Horse & Carriage* upcoming at Prologue Theatre. Other acting credits include productions at Arena Stage, The Kennedy Center, Studio Theatre, The Shakespeare Theatre Company, Theater J, Ford's Theatre, Constellation Theatre, NextStop Theatre, American Stage (FL), Spooky Action Theatre, The Welders, Imagination Stage & Adventure Theatre MTC. Much love to his wife, Jen, his kids, Matthais, Jeremiah, Emily and his dog, Huey.

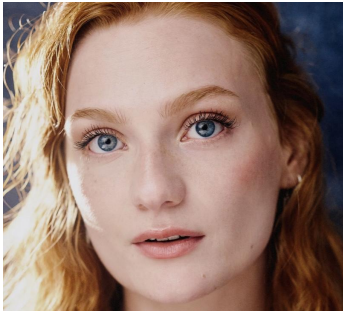




**Semaj Kelly** (he/him) (UNDERSTUDY: The Raconteur track) is excited to continue his acting journey with Rorschach Theatre. He has spent the past three years training at the Studio Acting Conservatory in DC. His credits include *Medea* at Capital Fringe, *Richard II* in the Frederick Shakespeare Festival, and *One Suit* at the NuBox Theatre.



**Tiana Lockhart** (she/her) (UNDERSTUDY: The Naïf track) is excited to be working with Rorschach once again as she previously appeared in the Klecksography Showcase earlier this year. Tiana is a DMV based actress who has appeared at Strand Theatre in *The Lady was a Gentleman* as well as in *Wednesdays in Mississippi* with Pipeline Playwrights. When not on stage, you can find her training at Studio Acting Conservatory. Tiana would like to thank God, her parents, her acting community and everyone in the cast & crew! "I am grateful to you all."



**Sarah Millard** (she/her) (UNDERSTUDY: The Convert track) is a theater-maker based here in DC. Some of her recent and local collaborations include *Women Playing Hamlet* with Workhouse Arts Center, Rorschach's Klecksography Project 2024, and staged readings with the Contemporary American Theater Festival. Sarah teaches with PAVAN Governors' School for the Arts in Virginia and holds a BFA in Acting from George Mason University. @millard\_sarah



**Taylor Stevens** (he/they) (UNDERSTUDY: The Messenger track) is an actor and writer based in Washington, DC, a recent graduate from Shenandoah Conservatory, and he is so excited to return to Rorschach Theatre for another Halloween show! His recent credits include *Night of the Living Dead Live!* (Rorschach Theatre), *12 Angry Jurors* (Shenandoah Conservatory), *SIDES* (To and Fro Productions), *Nora: A Doll's House* (Shenandoah Conservatory). [www.taylor-stevens.com](http://www.taylor-stevens.com) | Instagram: @theyaretaylor

---

## ABOUT THE CREATIVE TEAM



**Kylos Brannon** (he/him) (Video Designer) has worked as a video designer for 6 years, primarily for Rorschach. He was nominated for a Helen Hayes Award for *Night of the Living Dead* in 2023. When not working in theater, he can be found on stage at various clubs mixing live video projection for DJs or in class spoiling films for students at American University, where he is an Assistant Professor and Associate Director of the film program. He has worked on Rorschach's Psychogeographies projects since 2020 and will be involving AU's Humanities Truck in the upcoming fifth season.



**Aoife Creighton** (she/her) (Props Designer) is a freelance props designer from Baltimore, MD. She graduated from VCU with a degree in Interdisciplinary Studies with a focus in sculpture, art history, and American studies. Most recently, she worked as props coordinator on *The Colored Museum* (Studio Theatre). She is a soon-to-be-licensed cosmetologist and enjoys puppet-making, scenic painting, makeup application, and working as a hair braider at the Maryland Renaissance Festival! @aoifexhair



**Daelyn Funk** (they/them) (Assistant Lighting Designer and Master Electrician) is a freelance lighting technician based in the DC and Baltimore area. Their most recent credits include ME at Gala Hispanic Theatre for *The 22+ Weddings of Hugo* and *Momia en el Clóset* as well as Assistant Lighting Designer with INSeries Opera for *The Return of Ulysses*. They would like to thank their girlfriend Molly for dealing with the late nights and stressful days and for helping Daelyn keep their sanity. They can be reached at daelyn.funk.theatre@gmail.com.



**Sarah Beth Hall** (she/her) (scenic designer) is a freelance scenic designer based in the greater DC area. Select local credits include: *Sometimes the Rain...* (Rorschach Theatre), *Orlando* (Constellation Theatre), *Winnie the Pooh*, *A Year with Frog and Toad* (Imagination Stage), *Quilters* (1st Stage), *Frankenstein* (NextStop Theatre), *Make Way for Ducklings* (Adventure Theatre). Select regional credits include: *The Book of Will*, *The Rose Tattoo*, *The Caretaker* (Shakespeare Theatre of NJ), *God of Carnage* (The Cape Playhouse), *The Hobbit* (Adirondack Theatre Festival), *Neverwhere*, *Listen for the Light*, *SuperTrue*, *The Fisherman's Wife* (Know Theatre), *Bonnie & Clyde*, *Pippin*, *Mamma Mia!* (Summer Rep Theatre Festival). sarahbethhalldesign.com

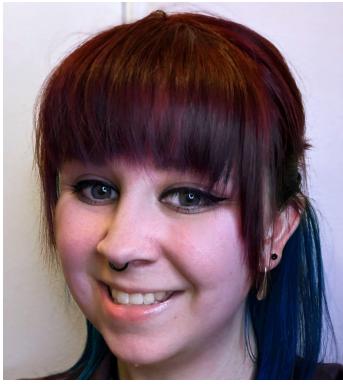


**Dean Leong** (he/him) (Lighting Designer) is a freelance Lighting Designer from the Washington DC area. Design credits include: *BURST*, and *Ghost Light* with Parlor Room Theater Co. *The Infinite Tales*, *Museum 2040*, and *Tempered: A Cabaret* with 4615 Theatre Co. *Chemical Exile: Synthesis*, *Dracula: A Feminist Revenge Fantasy*, *Really*, and *Sometimes the Rain*, *Sometimes the Sea* with Rorschach Theater Co. *Fitting In* with Arts on the Horizon. *Webster's Bitch!* with The Keegan Theatre. *My Mama and the Full Scale Invasion* with Woolly Mammoth Theatre Co. (Associate). *Romeo & Juliet* with Synetic Theater Co. (Assistant). He would like to thank his wife and daughter for their constant love and support.



**Leica Long** (she/her) (Stage Manager) is excited to be working on her first show at Rorschach and in DC! Originally from North Carolina, she recently moved TO DC from Richmond, VA, where she attended VCUarts. Leica's previous PSM credits include *Annabelle* (Firehouse Theatre), and *Men on Boats* (VCU). She also has worked as an ASM on *POTUS*, *Satchmo* at the Waldorf, *Silver Belles*, *After December* (Virginia Repertory), *Vanessa* (Spoleto Festival USA), and *How I Learned to Drive* (The Conciliation Lab).





**Ashlynnne (Ash) Ludwig** (she/her) (Costume Designer) is excited to team up with Rorschach once again! Local credits include *Angel Number Nine* and *Human Museum* at Rorschach Theatre, *P.Nokio* at Imagination Stage, and *Urinetown* at American University. Ashlynnne is also a part-time faculty member of Montgomery College. Associate design credits include *Soft Power* and *Pacific Overtures* at Signature Theatre, *People, Places, and Things* at Studio Theatre, and *Quixote Nuevo* at Roundhouse Theatre. Other credits include *Anastasia*, *Little Shop of Horrors*, *Hunchback of Notre Dame*, and *The Drowsy Chaperone* at the Cumberland County Playhouse. @ashludwigcostumes



**Natasha Sánchez** (she/her) (Assistant Stage Manager) is eager to take the plunge with Rorschach Theatre into this enthralling production of *Sleeping Giant*! Originally from Southern California, she has enjoyed a vibrantly multifaceted artistic lifestyle as an operatic performer and advocate for musical outreach, in addition to her current parallel passion for Stage Management. Her most recent favorite collaborations include: Rorschach Theatre: *Human Museum*, *Night of the Living Dead*, *Angel Number Nine*, *Sometimes the Rain Sometimes the Sea*; Theatre Washington: Theatre Week Kickoff 2024; Constellation Theatre Company: *Desperate Measures*, *The School for Lies*; Ford's Theatre: *History on Foot*; *NX5: The Empire Strips Back* - DC Tour!



**Jillian Skara** (she/her) (Assistant Costume Designer) is recent graduate of American University with a B.A. in musical theatre. She been a staff member in the Greenberg Theatre costume shop since 2021. She was the assistant costume designer on *Head Over Heels* and *Henri IV pt 1*, and the Costume Coordinator for *Overture 2023*. Also at AU, Jillian has performed in *Head Over Heels* (Pamela), *Henri IV pt 1* (Lady Mortimer), and *Lost Girl* (Toodles). Most recently, Jillian wrote, directed, composed, and designed an original musical: *The Voices In Your Head*. Jillian is so thankful to Rorschach and Ash for her first professional theatre experience. @thejillianskara



**Maddie Southard** (she/her) (Technical Director) is excited to be a part of her first show at Rorschach! She is a carpenter, electrician, and lighting designer in the DC area. Select Credits include Constellation Theater Company (*Is God Is*), Flying V Productions, Woolly Mammoth Theater, and George Mason University (*Nine to Five*). Enjoy the show!



**Thom J. Woodward** (he/him) (Sound Designer) is a DC-based sound designer and audio engineer, and he is excited to work with Rorschach Theatre for the first time! Thom came to DC from South Georgia to attend Howard University, where he studied radio production. He edits, mixes, and designs sound for live theatre and other forms of audio storytelling. Recent credits include: *Zora* at The Essential Theatre; *The House That Will Not Stand* at Howard University; and *Cradle And All* at Ally Theatre Company. He is a member of the Theatrical Sound Designers and Composers Association (TSDCA) and the Audio Engineering Society (AES).



# RORSCHACH THEATRE STAFF

**Founding Artistic Directors:** Jenny McConnell Frederick and Randy Baker

**General Manager:** John Ralls

**Production Manager:** Germar Townsend

**Board of Directors:** David Ghatan (Chair), Randy Baker, Darian Bedford, Claire Carlin, Olivia Kohler-Maga, Sonali Kumar, Jenny McConnell Frederick, John Ralls, J. Toscano, Heather Whitpan



## SLEEPING GIANT SPECIAL THANKS:

Lerner Enterprises, The Golden Triangle BID, Theatre Alliance, Gala Theatre, Georgetown Theatre Department, Catholic University, American University, National Conservatory for the Dramatic Arts, Pixelumen Lab, CM Kling, CB House, Jason Aufdem-Brinke, Katie Babinski, Andrew Brown, Shanara Gabrielle, Nan Ficca, Tom Fish, Holden Gunster, Ben Harvey, Libby Henshaw, Max Johnson, Hailey LaRoe, Briana Manente, Brian McDermott, Sydney Moore, Melissa Pratt, Jonathan Dahm Robertson, David M. Riches, Eleshia Simms Harris.

## KEEP THE MAGIC ALIVE

*Hulu is amazing, you guys. And Netflix. Seriously. It's right there in the tv already. No shoes—or even pants—required.*

*Rorschach Theatre knows how stiff the competition is when it comes to your entertainment options. But as you know – having spent more than 20 years with our unique brand of theatre – what we do is different. It's our intention to keep engaging you in a way that Hulu never can, bringing you spine-tingling, heartwarming, brain-teasing events that immerse you and engage you.*

*Please consider making a tax-deductible contribution to Rorschach Theatre today.*

*We can't do it without you.*

**[CLICK HERE to donate Today](#)**

**[rorschachtheatre.com/support](https://rorschachtheatre.com/support)**

**OR**

**venmo @rorschachdc**

# Rorschach Theatre thanks its contributors

**SLEEPING GIANT is produced in partnership with  
Lerner Enterprises and The Golden Triangle BID  
and with support provided by  
the DC Commission for the Arts and Humanities.**

**Rorschach's Season is also sponsored in part by generous contributions from:  
The Eugene M. Lang Foundation, The Nora Roberts Foundation,  
The Morgan Fund, and The Share Fund**

## **Season Sponsor (\$5,000+)**

Susan & Dixon Butler  
DC Commission on the Arts and  
Humanities  
Eugene M. Lang Foundation  
The Morgan Fund  
Nora Roberts Foundation  
The Share Fund  
Steven Yockey

## **Production Sponsor (\$1,000+)**

Sunny and Bill Alsup  
Elizabeth Blakeslee  
Susan & Dixon Butler  
Claire Carlin  
Lou & Bonnie Cohen  
Mark DeVries  
Alex Gallimore  
David Ghatan  
Karen Lange  
Lynne Martin  
Pat Murphy Sheehy  
Craig Pascal  
Julie Rios  
J. Toscano  
Catherine Tripp  
Westin Washington DC City Center  
Heather Whitpan

## **Opening Night Sponsor (\$500+)**

Jon C Babb  
Brooke Clagett  
Anne Corbett  
Sara Cormeny  
and Pete Miller  
Jeffrey Cunard  
John Driscoll  
In memory of Ellen  
Houseknecht  
Olivia Kohler-Maga  
Charlotte Magee  
Karl Miller  
Scott Schreiber  
David Sharman  
Mark Stalzer  
Rose Thun  
Charles Wilkes  
Gerald Yuille

## **First Read Club (\$250+)**

Allison Bouley  
William Boyle  
Robert & Joy Brillante  
Scott Chew  
Congressional Cemetery  
Daniel Corle  
Edward Cragg  
Bennett Cross  
Grace Denman  
Matt Dunphy

Sharon Emory  
Joan Fabry and Mike Klein  
Abby Fenton  
Richard Paul Fiske  
Elizabeth Friedman  
Jeff Gee  
Baxter Goodly  
Trevor Goodyear  
Julia Gothe  
Erik Harrison  
Nannette Henderson  
Julie Hill  
Jamie Hine  
Alison Drucker  
and Tom Holzman  
John and Maggie Horn  
Melanie Hudson  
Adrian Jesus Iglesias  
Inter-lux LLC  
Jewish Communal Fund  
Tatiana Karpova  
Joanne Kelly  
Kyle Lehman  
Timothy McConnell  
Marc Okrand  
Kyoko Pendleton  
Carmen C Ramirez  
Rex Robison  
Michael Rucki  
Kaiti Saunders  
& Rob Colenso  
Barbara Strack  
Dita Verheij  
Kelley Wells  
Ruth Werner  
Eva Wingren

**CONTINUED ON NEXT PAGE**



## **Fan Club (\$100+)**

Donna Ari  
Ronald Dennis Bass  
Sherry & Paul Bouley  
William Braithwaite  
Joshua Drew Bryner  
Michael L Burke and Carl W Smith  
Jennine Carmichael  
Lisa Carr  
Sarah Cochran  
Franklin Coleman  
Rachael Feola  
Rick & Diane Flaherty  
Stacey Griffith  
Nancy Hartsock  
Linette Hwu  
Kimberly Iwansky  
Monica Jilling  
Adam Johnston  
James Jordan  
Michael Kramer  
and Jennifer Mendenhall  
Michael Lastort  
Nancy Lazear  
Alesia Lucas  
Letty Medrano  
Keith J Miller  
Stacie Mruk  
Charles O'Toole  
Patricia Petersilia  
David Reznik  
Mary Ristau  
Howard Shalwitz  
Carmine Spellane  
Jordan Sudermann  
Ashley Taylor  
William Wheeler  
Gerry Widdicombe  
Cattleya Wongkongkatap

## **Love & Thanks (Up to \$99)**

Amira Abadir  
Lindsay Allen  
Nathalie Bacino  
Geoff Bacino  
Nazhin Beiramee  
Robert Bowen Smith  
Gina Brillante  
Margaret Brown  
Eugene Buot  
Diana Cherkas  
Carrie J Cole  
Mary Louise Corradino  
Lee Cromwell  
Paul Davidson  
Mikhail Delinois  
Kelly DeLoach  
Gillian Drake  
Debra Duffin  
Mark Farmer  
Martha C Galvin  
Esther Geiger  
Katie Golden  
Santiago Gonzalez  
Edward Gramlich  
Timothy Gregory  
Parrie Henderson-O'Keefe  
Allen Hengst  
Michelle Carter Hilton  
Patricia Horrall  
Dave Houston  
Jason Howard  
Amy Hubbard  
John Huennekens  
Christopher James  
Rachel Johns  
Amanda Johnson  
Jennifer Knight  
Brianna Knoppow  
Peggy Kong  
Jackie Kozdras  
Maeve Lausch  
Denise Liberton  
Nancy Linden  
Amber Logsdon

Lynn Luthey  
Chad Maisel  
Juli Majernik  
Laura Marks  
Lindsay Marks  
James Marmolejo Mendez  
Sunil Matte  
Scott McCormick  
Katie McCreary  
Connor Patrick McCreesh  
Patrick McEvoy  
JP McLaurin  
Holly Middleton  
Catherine Minkler  
Dustin Murray  
Tyler Nelson  
Alyssa Neumann  
Jennifer Osborn  
Monica Jane Peyton  
Tuyet Pham  
Francisco Reinoso  
Heather Roemer  
Linda Russell  
Bradley Saunders  
& Gail Adolfo  
Catherine Sexton  
Emma Sloane  
Valeria Sosa Garnica  
Stephen Stahr  
Koralleen Stavish  
Cristen Stephansky  
John Stoltenberg  
Marlin Strand  
Jared Strange  
Nick Temple  
Lynne Toskovich  
Keri Towler  
Rachel Tuckerman  
Jessica VanDerMiller  
Benjamin Verschoor  
Dan Via  
Samuel Waite  
Jonathan Werner  
Brandy White  
Mila Whiteley  
E-hui Woo  
Patricia Zweibel

# COMING UP THIS SEASON:



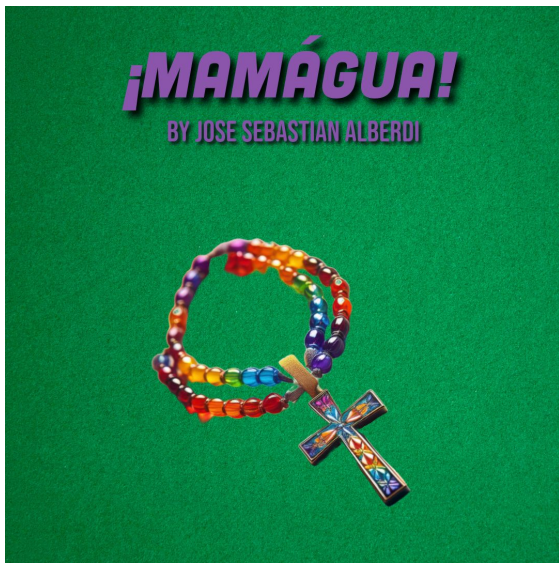
## **THE FIGS**

**By Doug Robinson**

**Directed by Randy Baker**

**February 14 – March 16, 2025**

A fig-obsessed king's bizarre contest sets off a whirlwind adventure featuring quirky farmers, a lovesick innkeeper, and a chaotic storyteller. THE FIGS is an adult fairy tale that deconstructs the genre with self-aware humor, queer characters, and unexpected twists.



## **¡MAMÁGUA!**

**By jose sebastian alberdi**

**May 2 – June 1, 2025**

Absurdly hilarious and surreal, ¡MAMÁGUA! follows a devout Catholic mother who goes to supernatural extremes to save her son's soul. This offbeat, dark comedy flips the typical coming-out story upside down, blending family drama, religion, and folklore with contemporary perspectives.

**Did you already see SLEEPING GIANT?  
There's still time to subscribe to the season!**

For more information on "mid-season subscriptions" please visit  
[\*\*rorschachtheatre.thundertix.com/packages\*\*](https://rorschachtheatre.thundertix.com/packages)

**There's more coming up this season! See the next page for more....**



# VOX POPULI:

## A PSYCHOGEOGRAPHIES PROJECT

Created by Randy Baker, Kylos Brannon,  
Jenny McConnell Frederick, and Jonelle Walker



VOX POPULI is a six-chapter, six-month long experience across multiple locations in Washington DC.

*"With Psychogeographies, Rorschach Theatre excites the mind and ignites curiosity with unique storylines incorporating the fascinatingly rich history of DC."*

— DC Theater Arts

Two teenagers fall through time after a shared moment in the woods. Trying to find their way home, they land at Washington DC protests through history, encountering the city they thought they knew through the eyes of those who sought to change it.

A Psychogeographies project, VOX POPULI harnesses the power of both the built and natural world to create a visceral piece of immersive storytelling. Each chapter provides instructions to travel to a new curated location in the DC area and a box of artifacts to engage all five senses while exploring each site with story elements such as letters, music, souvenirs, or photos.

Subscriptions to Vox Populi include the multi chapter experience as well as a ticket to a summer live performance that culminates the story.

**Subscriptions and more information (including frequently asked questions) can be found here: [rorschachtheatre.com/vox-populi](https://rorschachtheatre.com/vox-populi)**

**Magic in Rough Spaces presents:  
SO LATE INTO THE NIGHT**

**By Shawn Northrip**

**October 27 @ 7pm | 1020 Connecticut Avenue**

A work-in-process staged reading of a brand new rock séance conjured by Shawn Northrip. On the precipice of writing her masterpiece Frankenstein, Mary Shelly gathers with friends and lovers to try and get a look into the afterlife.